

KRAFTPIPER

OG DUPPEDITTER



HYTORC

tlf: 51 71 54 00

kundeservice@hytorc.no

innhold

	seks - kant piper	2
	tolv - kant piper	28
	torx - piper, innvendig	29
	tilbehør	34
	pipesett	35
	slagnøkler	42
	seks kant utvendig	44
	spesialverktøy	46

seks-kant piper



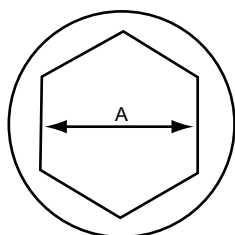
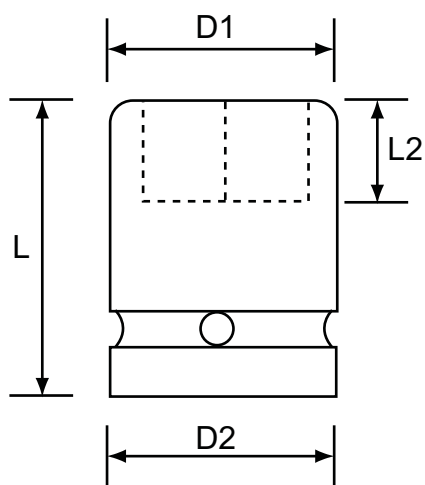
1/4" standard lengde



mm

Size (A) mm	D2 mm	D1 mm	L2 mm	L mm	Best. nr
4	13	7.6	4	23	04M04
4.5	13	8.2	5	23	04M04.5
5	13	8.8	5	23	04M05
5.5	13	9.5	5	23	04M05.5
6	13	10	6	23	04M06
7	13	11.3	6	23	04M07
8	13	12.5	7	23	04M08
9	13	13.8	7	23	04M09
10	13	15	7	23	04M10
11	13	16.3	8	23	04M11
12	13	17	8	23	04M12
13	13	18.8	8	23	04M13
14	13	20	8	2	04M14

2



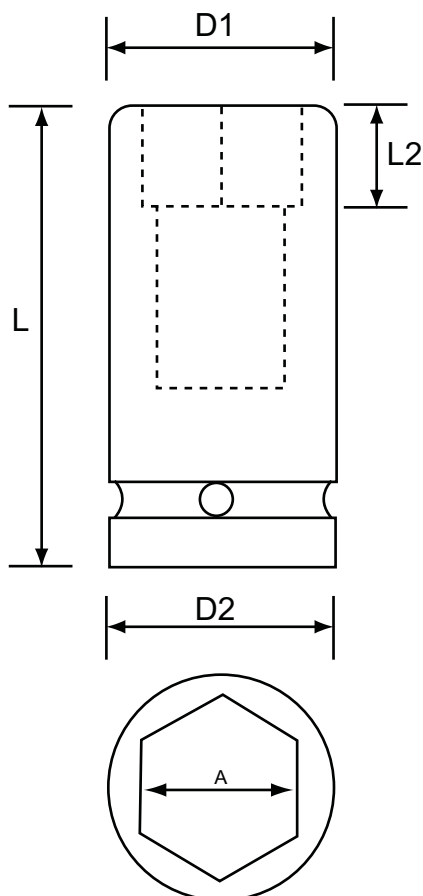
AF

Size (A) inch	D2 mm	D1 mm	L2 mm	L mm	Best. nr
3/16	13	8.5	5	23	0403
7/32	13	9.5	5	23	0403.5
1/4	13	10.3	6	23	0404
9/32	13	11.3	6	23	0404.5
5/16	13	12.5	7	23	0405
11/32	13	13.8	7	23	0405.5
3/8	13	15	7	23	0406
7/16	13	16.3	8	23	0407
1/2	13	18.8	8	23	0408
9/16	13	20	8	23	0409

seks-kant piper



1/4 " lang type



mm

Size (A) mm	D2 mm	D1 mm	L2 mm	L mm	Best. nr
4	13	7.6	4	50	04M04L
4.5	13	8.2	6	50	04M04.5L
5	13	8.8	6	50	04M05L
5.5	13	9.5	6	50	04M05.5L
6	13	10	7	50	04M06L
7	13	11.3	7	50	04M07L
8	13	12.5	9	50	04M08L
9	13	13.8	9	50	04M09L
10	13	15	9	50	04M10L
11	13	16.3	9	50	04M11L
12	13	17	9	50	04M12L
13	13	18.8	9	50	04M13L
14	13	20	9	50	04M14L

AF

Size (A) inch	D2 mm	D1 mm	L2 mm	L mm	Best. nr
3/16	13	8.5	6	50	0403L
7/32	13	9.5	6	50	0403.5L
1/4	13	10.3	7	50	0404L
9/32	13	11.3	7	50	0404.5L
5/16	13	12.5	9	50	0405L
11/32	13	13.8	9	50	0405.5L
3/8	13	15	9	50	0406L
7/16	13	16.3	9	50	0407L
1/2	13	18.8	9	50	0408L
9/16	13	20	9	50	0409L

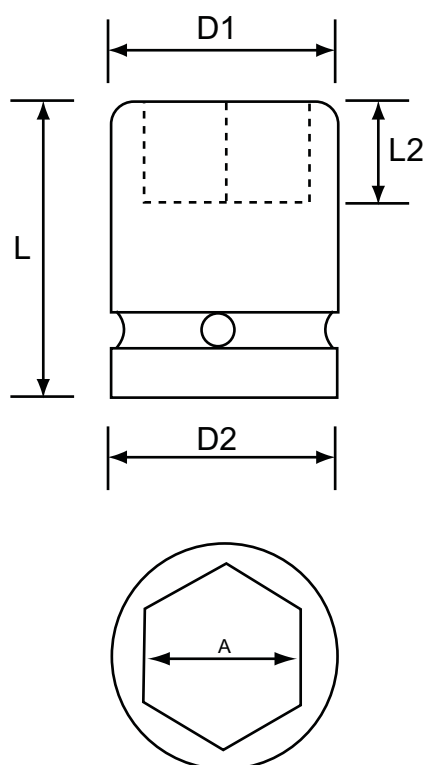
seks-kant piper



3/8 " standard lengde



4



mm

Size (A) mm	D2 mm	D1 mm	L2 mm	L mm	Best. nr
6	19	11	4	30	06M06
7	19	12.5	8	30	06M07
8	19	13.8	8	30	06M08
9	19	15	8	30	06M09
10	19	16	8	30	06M10
11	19	17.5	9	30	06M11
12	19	19	9	30	06M12
13	22	20	9	30	06M13
14	22	21	9	30t	06M14
15	22	22	11	30	06M15
16	22	24	11	30	06M16
17	22	25	11	30	06M17
18	22	26	11	30	06M18
19	22	27.5	11	30	06M19
20	22	28	12	30	06M20
21	22	30	13	30	06M21
22	23	32	13	30	06M22
24	23	32	15	30	06M23

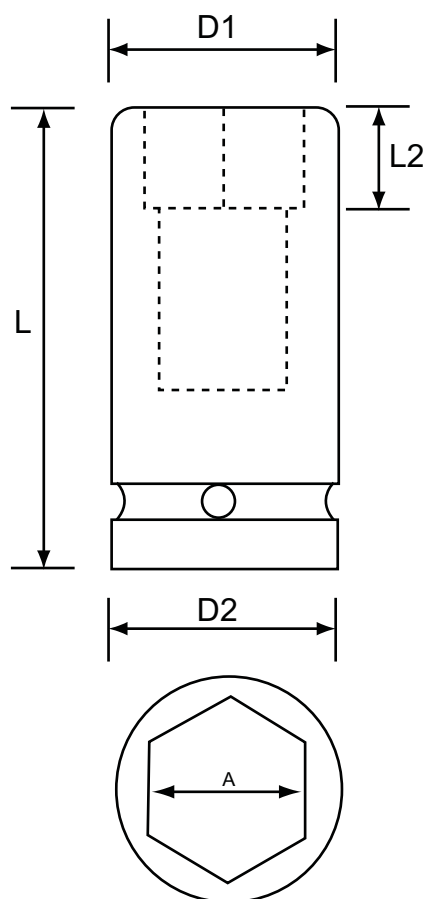
AF

Size (A) inch	D2 mm	D1 mm	L2 mm	L mm	Best. nr
1/4	19	11	4	30	0604
5/16	19	12.5	8	30	0605
3/8	19	14.5	8	30	0606
7/16	19	17	9	30	0607
1/2	19	19	9	30	0608
9/16	20	20	9	30	0609
5/8	24	24	11	30	0610
11/16	24	24	11	30	0611
3/4	26	26	11	30	0612
13/16	28	28	13	30	0613
7/8	30	30	13	30	0614
15/16	32	32	13	30	0615

seks-kant piper



3/8 " lang type



mm

Size (A) mm	D2 mm	D1 mm	L2 mm	L mm	Best. nr
7	19	12.5	12	65	06M07L
8	19	13.8	12	65	06M08L
9	19	15	12	65	06M09L
10	19	16	12	65	06M10L
11	19	17.5	25	65	06M11L
12	19	19	25	65	06M12L
13	22	20	25	65	06M13L
14	22	21	25	65	06M14L
15	22	22	25	65	06M15L
16	22	24	25	65	06M16L
17	22	25	25	65	06M17L
18	22	26	25	65	06M18L
19	22	27.5	25	65	06M19L
20	22	28	25	65	06M20L
21	22	30	25	65	06M21L
22	23	32	25	65	06M22L
24	23	32	25	65	06M24L

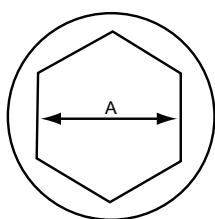
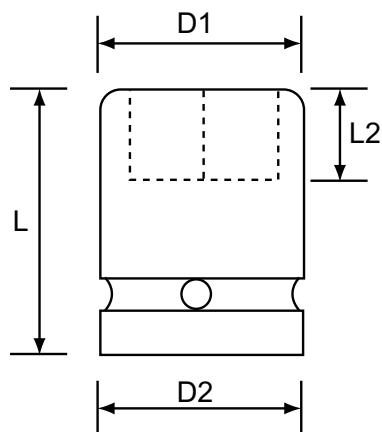
AF

Size (A) inch	D2 mm	D1 mm	L2 mm	L mm	Best. nr
5/16	19	12.5	12	65	0605L
3/8	19	14.5	12	65	0606L
7/16	19	17	25	65	0607L
1/2	19	19	25	65	0608L
9/16	20	20	25	65	0609L
5/8	24	24	25	65	0610L
11/16	24	24	25	65	0611L
3/4	26	26	25	65	0612L
13/16	28	28	25	65	0613L
7/8	30	30	25	65	0614L
15/16	32	32	25	65	0615L

seks-kant piper



3/8 " standard lengde



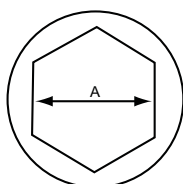
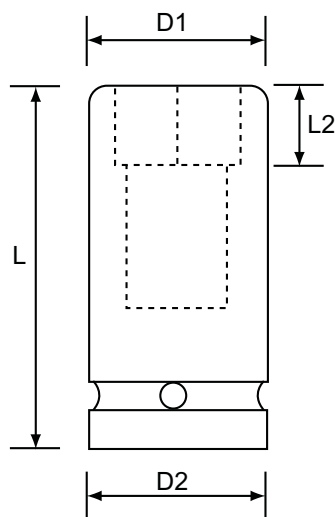
whitworth

Size (A) whit	D2 mm	D1 mm	L2 mm	L mm	Best. nr
1/8	19	15	8	30	06W02
3/16	19	17	9	30	06W03
1/4	22	21	9	30	06W04
5/16	24	24	11	30	06W05
3/8	22	26	11	30	06W06
7/16	22	30	13	30	06W07
1/2	32	32	13	30	06W08
9/16	35	35	15	40	06W09
5/8	35	42	18	40	06W10
11/16	35	42	18	40	06W11
13/16	30	50	23	40	06W13

6



3/8 " lang type



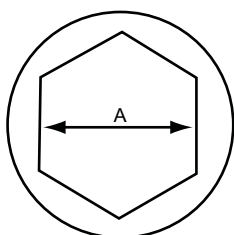
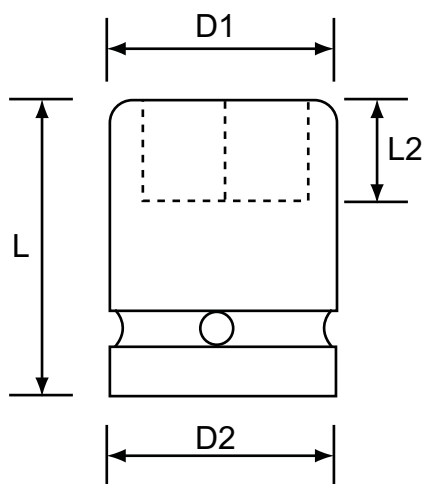
whitworth

Size (A) whit	D2 mm	D1 mm	L2 mm	L mm	Best. nr
1/8	19	15	12	65	06W02L
3/16	19	17	25	65	06W03L
1/4	22	21	25	65	06W04L
5/16	24	24	25	65	06W05L
3/8	22	26	25	65	06W06L
7/16	22	30	25	65	06W07L
1/2	32	32	25	65	06W08L
9/16	38	38	26	65	06W09L
5/8	41	41	27	65	06W10L
11/16	41	41	27	65	06W11L
13/16	45	45	28	56	06W13L

seks-kant piper



1/2 " standard lengde



mm

Size (A) mm	D2 mm	D1 mm	L2 mm	L mm	Best. nr
8	25	15	9	38	08M08
9	25	16	12	38	08M09
10	25	17.5	12	38	08M10
11	25	18.7	12	38	08M11
12	25	20	12	38	08M12
13	25	21	12	38	08M13
14	25	22.5	12	38	08M14
15	30	23.7	12	38	08M15
16	30	25	12	38	08M16
17	30	26	13	38	08M17
18	30	27.5	13	38	08M18
19	30	28.7	13	38	08M19
20	30	30	13	38	08M20
21	30	30	13	38	08M21
22	30	32	13	38	08M22
23	30	32	13	38	08M23
24	30	35	20	45	08M24
25	30	36	20	45	08M25
26	30	38	22	50	08M26
27	30	38.7	22	50	08M27
28	30	40	22	50	08M28
29	30	40	22	50	08M29
30	30	42	22	50	08M30
31	30	43	28	50	08M31
32	30	44	28	50	08M32
33	30	45	28	50	08M33
34	30	46	28	50	08M34
35	30	49	28	50	08M35
36	30	49	28	50	08M36
38	38	52.5	26	50	08M38
41	44	58	24	65	08M41

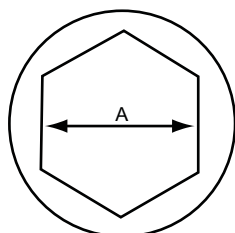
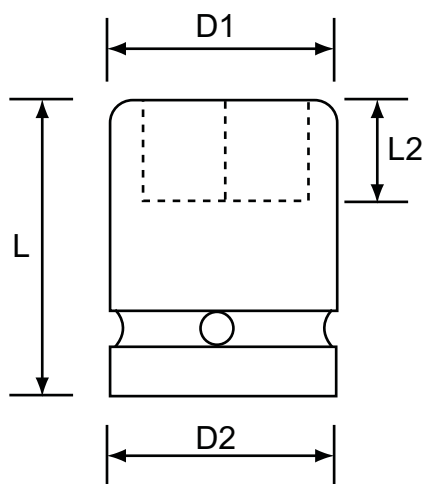
seks-kant piper



1/2 " standard lengde



8



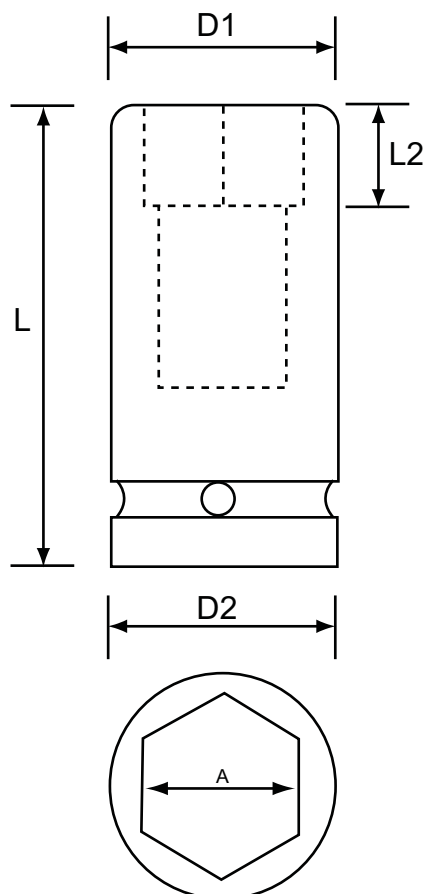
AF

Size (A) inch	D2 mm	D1 mm	L2 mm	L mm	Best. nr
5/16	22	15	9	38	0805
3/8	22	16	12	38	0806
7/16	22	18	12	38	0807
1/2	22	20	12	38	0808
9/16	24	22	12	38	0809
5/8	25	25	12	38	0810
11/16	26	26	13	38	0811
3/4	28	28	13	38	0812
13/16	30	30	13	38	0813
7/8	32	32	13	38	0814
15/16	34	34	13	38	0815
1"	36	36	14	38	0816
1-1/16	38	38	16	40	0817
1-1/8	38	40	16	40	0818
1-3/16	38	42	16	40	0819
1-1/4	38	44	18	40	0820
1-5/16	38	45	21	43	0821
1-3/8					0822
1-7/16	38	50	26	50	0823
1-1/2	38	52.5	26	50	0824

seks-kant piper



1/2 " lang type



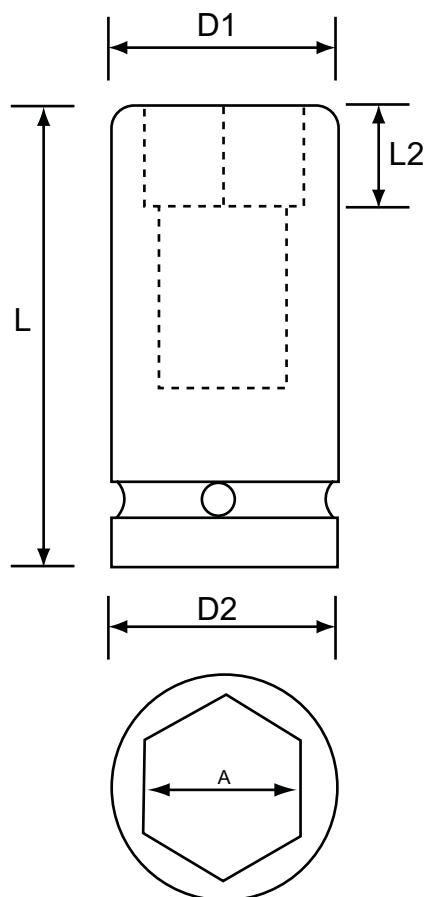
mm

Size (A) mm	D2 mm	D1 mm	L2 mm	L mm	Best. nr
8	25	15	13	78	08M08L
9	25	16	14	78	08M09L
10	25	17.5	14	78	08M10L
11	25	18.7	14	78	08M11L
12	25	20	14	78	08M12L
13	25	21	14	78	08M13L
14	25	22.5	17	78	08M14L
15	30	23.7	17	78	08M15L
16	30	25	17	78	08M16L
17	30	26	17	78	08M17L
18	30	27.5	17	78	08M18L
19	30	28.7	19	78	08M19L
20	30	30	19	78	08M20L
21	30	30	24	78	08M21L
22	30	32	24	78	08M22L
23	30	32	24	78	08M23L
24	30	35	24	78	08M24L
25	30	36	24	78	08M25L
26	30	38	24	78	08M26L
27	30	38.7	54	78	08M27L
28	30	40	54	78	08M28L
29	30	40	54	78	08M29L
30	30	42	54	78	08M30L
31	30	43	54	78	08M31L
32	30	44	54	78	08M32L
33	30	45	54	78	08M33L
34	30	46	54	78	08M34L
35	30	49	54	78	08M35L
36	30	49	54	78	08M36L
38	38	52.5	54	78	08M38L

seks-kant piper



1/2 " lang type



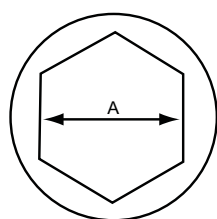
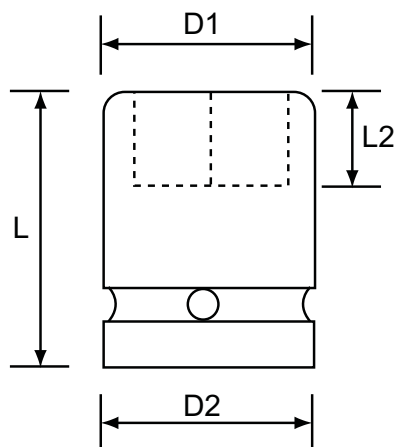
AF

Size (A) inch	D2 mm	D1 mm	L2 mm	L mm	Best. nr
5/16	22	15	13	78	0805L
3/8	22	16	14	78	0806L
7/16	22	18	14	78	0807L
1/2	22	20	14	78	0808L
9/16	24	22	17	78	0809L
5/8	25	25	17	78	0810L
11/16	26	26	17	78	0811L
3/4	28	28	19	78	0812L
13/16	30	30	24	78	0813L
7/8	32	32	24	78	0814L
15/16	34	34	24	78	0815L
1"	36	36	24	78	0816L
1-1/16	38	38	24	78	0817L
1-1/8	38	40	54	78	0818L
1-3/16	38	42	54	78	0819L
1-1/4	38	44	54	78	0820L
1-5/16	38	45	54	78	0821L
1-3/8	38	48.5	54	78	0822L
1-7/16	38	50	54	78	0823L
1-1/2	38	52.5	54	78	0824L

seks-kant piper



1/2 " standard lengde

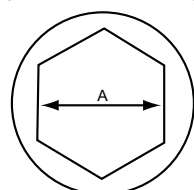
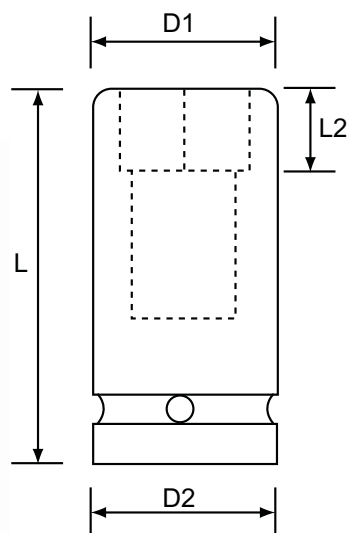


whitworth

Size (A) whit	D2 mm	D1 mm	L2 mm	L mm	Best. nr
1/8	25	16	12	38	08W02
3/16	25	20	12	38	08W03
1/4	25	22.5	12	38	08W04
5/16	25	25	12	38	08W05
3/8	30	27.5	13	38	08W06
7/16	30	30	13	38	08W07
1/2	30	34	13	38	08W08
9/16	30	35	22	50	08W09
5/8	30	40	22	50	08W10
11/16	30	43	28	50	08W11
3/4	30	45	28	50	08W12
7/8	38	52	26	50	08W14



1/2 " lang type



whitworth

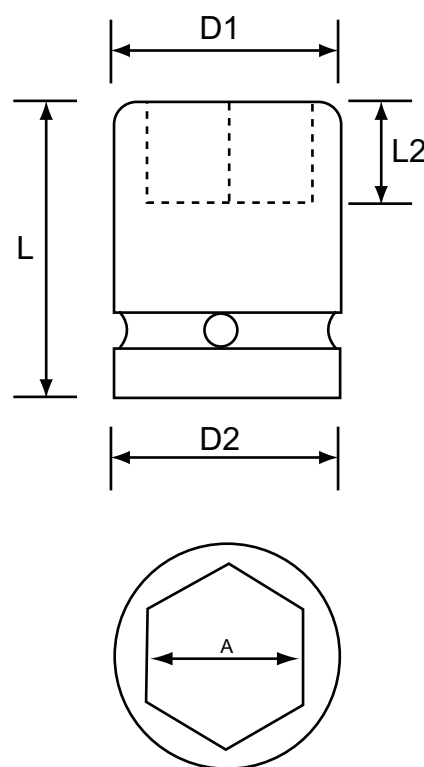
Size (A) whit	D2 mm	D1 mm	L2 mm	L mm	Best. nr
1/8	25	16	14	78	08W02L
3/16	25	20	14	78	08W03L
1/4	25	22.5	17	78	08W04L
5/16	25	25	17	78	08W05L
3/8	30	27.5	17	78	08W06L
7/16	30	30	24	78	08W07L
1/2	30	34	24	78	08W08L
9/16	30	35	24	78	08W09L
5/8	30	40	54	78	08W10L
11/16	30	43	54	78	08W11L
3/4	30	45	54	78	08W12L
13/16	30	47	57	78	08W13L
7/8	38	53	57	78	08W14L

seks-kant piper



3/4 " standard lengde
mm

Size (A) mm	D2 mm	D1 mm	L2 mm	L mm	Best. nr
13	44	25	12	50	12M13
14	44	25	12	50	12M14
15	44	26	12	50	12M15
16	44	27	12	50	12M16
17	44	31	12	50	12M17
18	44	32	12	50	12M18
19	44	33	14	50	12M19
20	44	34	16	50	12M20
21	44	35	16	50	12M21
22	44	37	16	50	12M22
23	44	38	16	50	12M23
24	44	39	16	50	12M24
25	44	40	16	50	12M25
26	44	41	16	50	12M26
27	44	43	16	54	12M27
28	44	44	23	54	12M28
29	44	45	23	54	12M29
30	44	47	23	54	12M30
31	44	48	23	56	12M31
32	44	49	23	56	12M32
33	44	51	23	56	12M33
34	44	52	23	56	12M34
35	44	53	23	56	12M35
36	44	54	23	56	12M36
37	44	56	24	58	12M37
38	44	57	24	58	12M38
39	44	58	24	58	12M39
40	44	58	24	58	12M40
41	44	60	24	58	12M41
42	44	62	24	58	12M42
43	44	63	27	63	12M43
44	44	65	27	63	12M44
45	44	66	27	63	12M45
46	44	67	27	63	12M46
47	44	68	32	68	12M47



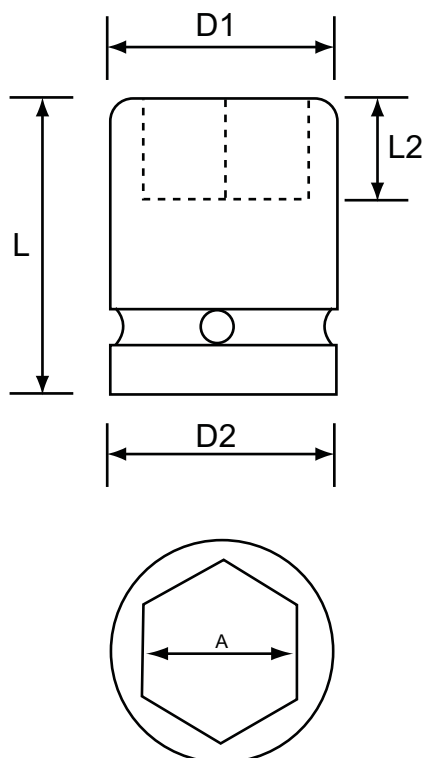
mm

Size (A) mm	D2 mm	D1 mm	L2 mm	L mm	Best. nr
48	44	69	32	68	12M48
49	44	70	34	70	12M49
50	54	71	35	72	12M50
52	54	74	35	72	12M52
54	54	77	35	72	12M54
55	54	77	35	74	12M55
56	54	80	35	74	12M56
60	54	84	35	75	12M60
65	54	88	38	78	12M65
67	54	90	40	80	12M67

seks-kant piper



3/4 " standard lengde



AF

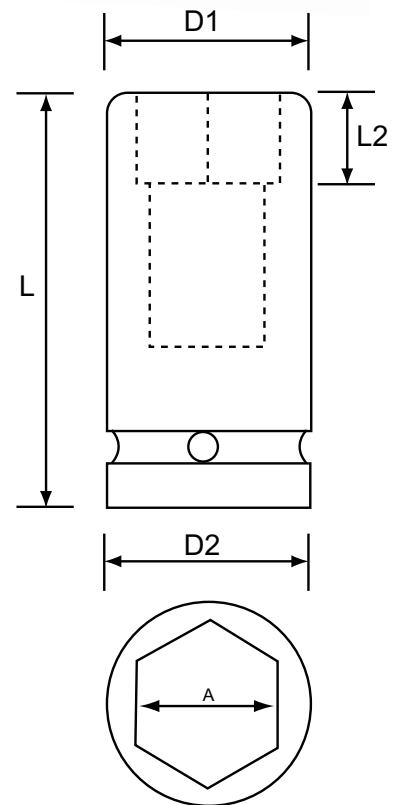
Size (A) inch	D2 mm	D1 mm	L2 mm	L mm	Best. nr
1/2	38	22	12	50	1208
9/16	38	25.5	12	50	1209
5/8	38	27.5	12	50	1210
11/16	38	29	12	50	1211
3/4	38	30	14	50	1212
13/16	38	32	16	52	1213
7/8	38	34	16	52	1214
15/16	38	36	16	52	1215
1"	38	40	16	52	1216
1-1/16	38	40	16	52	1217
1-1/8	42	42	20	52	1218
1-3/16	44	44	20	52	1219
1-1/4	44	44	20	52	1220
1-5/16	44	47	23	56	1221
1-3/8	44	50	23	56	1222
1-7/16	44	51	23	56	1223
1-1/2	44	53	23	56	1224
1-9/16	44	56	27	62	1225
1-5/8	44	58	27	62	1226
1-11/16	44	63.5	27	62	1227
1-3/4	44	65	27	62	1228
1-13/16	44	67	32	68	1229
1-7/8	44	68	32	68	1230
1-15/16	44	70	34	70	1231
2"	54	71	35	72	1232
2-1/16	54	74	35	72	1233
2-1/8	54	77	35	72	1234
2-3/16	54	77	35	74	1235
2-1/4	54	80	35	74	1236
2-5/16	54	82	35	75	1237
2-3/8	54	84	35	75	1238
2-7/16	54	85	35	75	1239
2-1/2	54	86	35	75	1240

seks-kant piper



3/4 " lang type
mm

Size (A) mm	D2 mm	D1 mm	L2 mm	L mm	Best. nr
13	44	25	20	95	12M13L
14	44	25	20	95	12M14L
15	44	26	20	95	12M15L
16	44	27	20	95	12M16L
17	44	31	20	95	12M17L
18	44	32	20	95	12M18L
19	44	33	23	95	12M19L
20	44	34	23	95	12M20L
21	44	35	23	95	12M21L
22	44	37	23	95	12M22L
23	44	38	23	95	12M23L
24	44	39	51	95	12M24L
25	44	40	51	95	12M25L
26	44	41	62	95	12M26L
27	44	43	62	95	12M27L
28	44	44	62	95	12M28L
29	44	45	62	95	12M29L
30	44	47	62	95	12M30L
31	44	48	62	95	12M31L
32	44	49	62	95	12M32L
33	44	51	62	95	12M33L
34	44	52	62	95	12M34L
35	44	53	62	95	12M35L
36	44	54	62	95	12M36L
37	44	56	62	95	12M37L
38	44	57	60	95	12M38L
39	44	58	60	95	12M39L
40	44	58	60	95	12M40L
41	44	60	60	95	12M41L
42	44	62	60	95	12M42L
43	44	63	60	95	12M43L
44	44	65	60	95	12M44L
45	44	65	68	100	12M45L
46	44	67	58	95	12M46L
47	44	68	58	95	12M47L



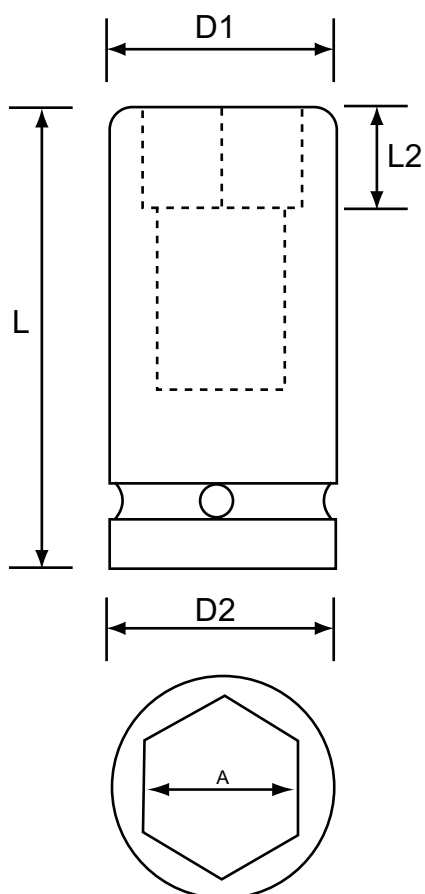
mm

Size (A) mm	D2 mm	D1 mm	L2 mm	L mm	Best. nr
48	44	69	58	95	12M48L
49	44	70	58	95	12M49L
50	54	71	58	95	12M50L
52	54	74	58	95	12M52L
54	54	77	64	95	12M54L
55	54	77	54	95	12M55L
60	54	84	54	95	12M60L
65	54	88	54	95	12M65L

seks-kant piper



3/4 " lang type



AF

Size (A) inch	D2 mm	D1 mm	L2 mm	L mm	Best. nr
9/16	38	25.5	20	85	1209L
5/8	38	27.5	20	85	1210L
11/16	38	29	20	85	1211L
3/4	38	30	23	85	1212L
13/16	38	32	23	85	1213L
7/8	38	34	23	85	1214L
15/16	38	36	41	85	1215L
1"	38	40	41	85	1216L
1-1/16	38	40	52	85	1217L
1-1/8	42	42	52	85	1218L
1-3/16	44	44	52	85	1219L
1-1/4	44	49	52	85	1220L
1-5/16	44	50	52	85	1221L
1-3/8	44	50	52	85	1222L
1-7/16	44	51	52	85	1223L
1-1/2	44	56	50	85	1224L
1-9/16	44	56	50	85	1225L
1-5/8	44	58	50	85	1226L
1-11/16	44	63.5	50	85	1227L
1-3/4	44	65	50	85	1228L
1-13/16	44	67	48	85	1229L
1-7/8	44	68	48	85	1230L
1-15/16	44	70	48	85	1231L
2"	54	71	48	95	1232L
2-1/16	54	74	58	95	1233L
2-1/8	54	77	54	95	1234L
2-3/16	54	77	54	95	1235L
2-1/4	54	80	54	95	1236L
2-5/16	54	82	54	95	1237L
2-3/8	54	84	54	95	1238L
2-7/16	54	85	54	95	1239L
2-1/2	54	86	54	95	1240L

seks-kant piper

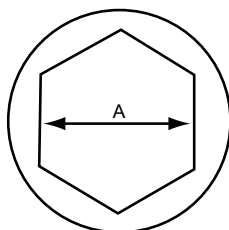
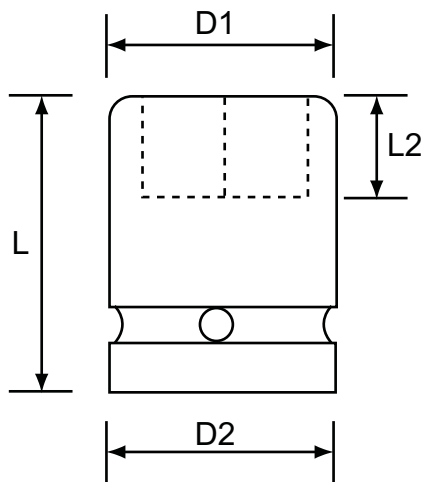


3/4 " standard lengde



whitworth

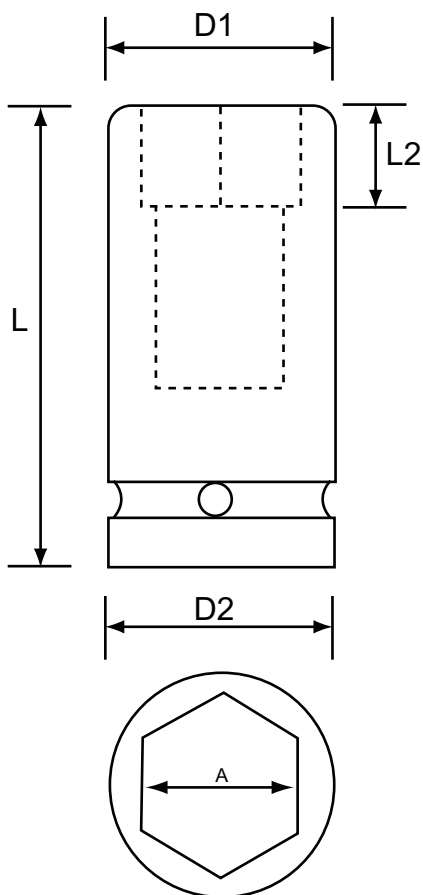
Size (A) whit	D2 mm	D1 mm	L2 mm	L mm	Best. nr
1/4	44	25	12	50	12W04
5/16	44	25	12	50	12W05
3/8	44	32	12	50	12W06
7/16	44	35	16	50	12W07
1/2	44	38	16	50	12W08
9/16	44	41	16	50	12W09
5/8	44	45	23	54	12W10
11/16	44	48	23	54	12W11
3/4	44	51	23	56	12W12
13/16	44	54	23	56	12W13
7/8	44	58	24	58	12W14
15/16	44	58	24	58	12W15
1"	44	63	27	63	12W16
1-1/16	44	67	27	63	12W17
1-1/8	44	69	32	68	12W18
1-1/4	54	74	35	72	12W20
1-3/8	54	80	35	74	12W22



seks-kant piper



3/4" lang type



whitworth

Size (A) whit	D2 mm	D1 mm	L2 mm	L mm	Best. nr
5/16	44	26	20	100	12W05L
3/8	44	32	20	100	12W06L
7/16	44	37	23	100	12W07L
1/2	44	39	23	100	12W08L
9/16	44	40	23	100	12W09L
5/8	44	45	23	100	12W10L
11/16	44	48	23	100	12W11L
3/4	44	51	25	100	12W12L
13/16	44	54	25	100	12W13L
7/8	44	60	25	100	12W14L
15/16	44	60	25	100	12W15L
1"	44	60	25	100	12W16L
1-1/16	44	67	26	100	12W17L
1-1/8	44	69	26	100	12W18L
1-1/4	54	74	26	100	12W20L
1-3/8	54	77	27	100	12W22L

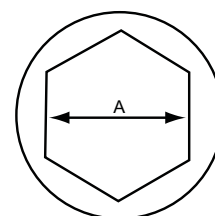
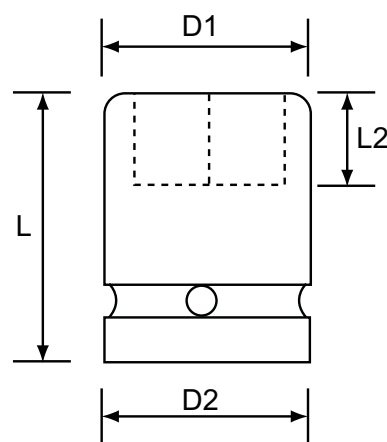
seks-kant piper



1" standard lengde

mm

Size (A) mm	D2 mm	D1 mm	L2 mm	L mm	Best. nr
17	54	34	17	58	16M17
18	54	34.5	17	58	16M18
19	54	35.5	17	58	16M19
20	54	36.6	17	58	16M20
21	54	37.5	17	58	16M21
22	54	40	17	58	16M22
23	54	41	17	58	16M23
24	54	42	17	58	16M24
25	54	43	17	58	16M25
26	54	44.5	17	58	16M26
27	54	46	17	58	16M27
28	54	47	17	58	16M28
29	54	48	19	60	16M29
30	54	50	21	60	16M30
31	54	51	21	60	16M31
32	54	52	21	60	16M32
33	54	53	21	60	16M33
34	54	55	21	62	16M34
35	54	55	21	62	16M35
36	54	56	30	65	16M36
37	54	59	30	65	16M37
38	54	59	30	65	16M38
39	54	60	31	67	16M39
40	54	62	31	67	16M40
41	54	63	31	67	16M41
42	54	64	36	74	16M42
43	54	66	36	74	16M43
44	54	67	36	74	16M44
45	54	68	36	74	16M45
46	54	69	36	74	16M46
47	54	72	36	74	16M47
48	54	73	36	74	16M48
50	54	74	42	80	16M50
51	54	76	44	80	16M51
52	54	77	44	84	16M52



mm

Size (A) mm	D2 mm	D1 mm	L2 mm	L mm	Best. nr
53	54	78	44	84	16M53
54	54	79	44	84	16M54
55	54	80	44	84	16M55
56	54	81	44	84	16M56
57	54	82	44	84	16M57
58	54	84	44	87	16M58
60	54	86	44	87	16M60
62	54	88	44	87	16M62
63	54	90	44	87	16M63
65	54	92	46	90	16M65
67	54	95	48	92	16M67
70	54	99	51	96	16M70
75	86	104	52	98	16M75
80	86	109	52	100	16M80
85	86	115	52	100	16M85
90	86	119	55	105	16M90
95	86	130	55	105	16M95
100	86	132	56	105	16M100
105	95	147	55	105	16M105
110	95	147	55	105	16M110

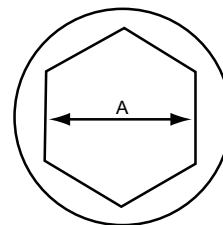
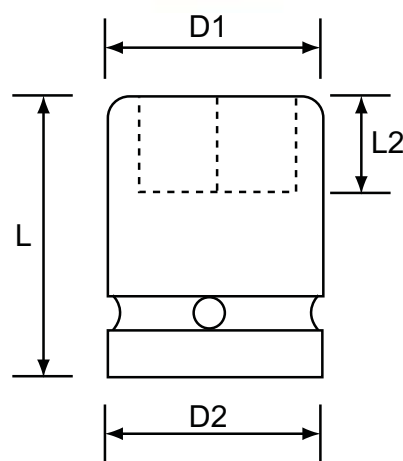
seks-kant nøkler



1" standard lengde

AF

Size (A) inch	D2 mm	D1 mm	L2 mm	L mm	Best. nr
3/4	51	36	17	58	1612
13/16	51	38	17	58	1613
7/8	51	39	17	58	1614
15/16	51	40	17	58	1615
1"	51	42	17	58	1616
1-1/16	51	44	17	58	1617
1-1/8	51	46	19	58	1618
1-3/16	51	48	21	60	1619
1-1/4	51	51	21	60	1620
1-5/16	52	53	21	62	1621
1-3/8	52	54	21	62	1622
1-7/16	52	56	26	62	1623
1-1/2	52	58	26	62	1624
1-9/16	52	60	26	62	1625
1-5/8	52	61.5	26	62	1626
1-11/16	52	65	27	64	1627
1-3/4	58	66	27	64	1628
1-13/16	58	68	27	64	1629
1-7/8	58	70	28	66	1630
1-15/16	58	72	28	68	1631
2"	58	74	31	70	1632
2-1/16	58	75	31	70	1633
2-1/8	58	78	31	70	1634
2-3/16	62	80	32	72	1635
2-1/4	62	84	34	75	1636
2-5/16	62	86	34	75	1637
2-3/8	62	87	35	78	1638
2-7/16	62	89	35	78	1639
2-1/2	62	91	36	80	1640
2-9/16	62	93	36	80	1641
2-5/8	62	95	38	82	1642
2-11/16	62	97	38	82	1643
2-3/4	62	98	40	85	1644
2-13/16	62	100	40	87	1645



AF

Size (A) inch	D2 mm	D1 mm	L2 mm	L mm	Best. nr
2-7/8	62	102	41	87	1646
2-15/16	86	104	48	95	1647
3"	86	106	52	98	1648
3-1/8	86	109	52	100	1650
3-1/4	86	113	52	100	1652
3-3/8	86	115	52	100	1654
3-1/2	86	119	55	105	1656
3-5/8	86	127	55	105	1658
3-3/4	86	130	55	105	1660
3-7/8	95	136	52	105	1662
4"	95	140	52	105	1664
4-1/8	95	143	52	105	1666
4-1/4	95	146	52	105	1668
4-1/2	95	152	52	105	1672

seks-kant piper



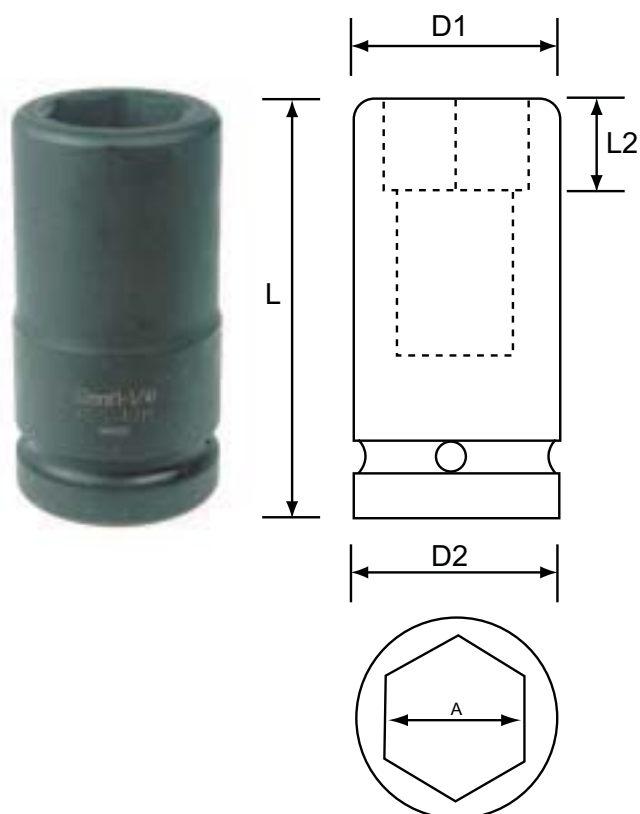
1" lang type

mm

Size (A) mm	D2 mm	D1 mm	L2 mm	L mm	Best. nr
17	54	34	21	100	16M17L
18	54	34.5	21	100	16M18L
19	54	35.5	21	100	16M19L
20	54	36.6	21	100	16M20L
21	54	37.5	21	100	16M21L
22	54	40	21	100	16M22L
23	54	41	21	100	16M23L
24	54	42	21	100	16M24L
25	54	43	21	100	16M25L
26	54	44.5	21	100	16M26L
27	54	46	23	100	16M27L
28	54	47	23	100	16M28L
29	54	48	50	100	16M29L
30	54	50	50	100	16M30L
31	54	51	50	100	16M31L
32	54	52	50	100	16M32L
33	54	53	50	100	16M33L
34	54	55	50	100	16M34L
35	54	55	50	100	16M35L
36	54	56	64	100	16M36L
37	54	59	64	100	16M37L
38	54	59	64	100	16M38L
39	54	60	64	100	16M39L
40	54	62	64	100	16M40L
41	54	63	64	100	16M41L
42	54	64	64	100	16M42L
43	54	66	64	100	16M43L
44	54	67	62	100	16M44L
45	54	68	62	100	16M45L
46	54	69	62	100	16M46L
47	54	72	62	100	16M47L
48	54	73	62	100	16M48L
50	54	74	62	100	16M50L
51	54	76	60	100	16M51L

mm

Size (A) mm	D2 mm	D1 mm	L2 mm	L mm	Best. nr
52	54	77	60	100	16M52L
53	54	78	60	100	16M53L
54	54	79	60	100	16M54L
55	54	80	60	100	16M55L
56	54	81	65	105	16M56L
57	54	82	65	105	16M57L
58	54	84	65	105	16M58L
60	54	86	77	120	16M60L
62	54	88	77	120	16M62L
63	54	90	77	120	16M63L
65	54	92	80	125	16M65L
67	54	95	80	125	16M67L
70	54	99	80	125	16M70L
75	86	104	87	135	16M75L
80	86	109	87	135	16M80L
85	86	115	87	135	16M85L
90	86	119	84	135	16M90L
95	86	130	84	135	16M95L
100	86	132	86	135	16M100L



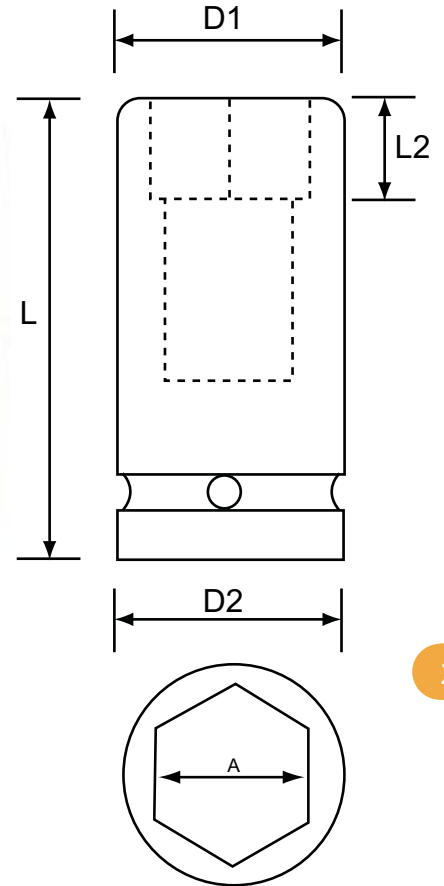
seks-kant piper



1" lang type

AF

Size (A) inch	D2 mm	D1 mm	L2 mm	L mm	Best. nr
3/4	51	36	21	90	1612L
13/16	51	38	21	90	1613L
7/8	51	39	21	90	1614L
15/16	51	40	21	90	1615L
1"	51	42	21	90	1616L
1-1/16	51	44	23	90	1617L
1-1/8	51	45	40	90	1618L
1-3/16	51	48	40	90	1619L
1-1/4	51	51	40	90	1620L
1-5/16	52	53	40	90	1621L
1-3/8	52	54	40	90	1622L
1-7/16	52	56	54	90	1623L
1-1/2	52	58	54	92	1624L
1-9/16	52	60	54	92	1625L
1-5/8	52	61.5	54	92	1626L
1-11/16	52	65	54	92	1627L
1-3/4	58	66	54	92	1628L
1-13/16	58	68	54	92	1629L
1-7/8	58	70	54	92	1630L
1-15/16	58	72	54	92	1631L
2"	58	74	54	95	1632L
2-1/16	58	75	54	95	1633L
2-1/8	58	78	54	95	1634L
2-3/16	62	80	60	100	1635L
2-1/4	62	84	60	100	1636L
2-5/16	62	86	62	105	1637L
2-3/8	62	87	62	105	1638L
2-7/16	62	89	67	110	1639L
2-1/2	62	91	67	110	1640L
2-9/16	62	93	75	120	1641L
2-5/8	62	95	75	120	1642L
2-11/16	62	97	78	124	1643L
2-3/4	62	98	78	124	1644L
2-13/16	62	100	80	128	1645L



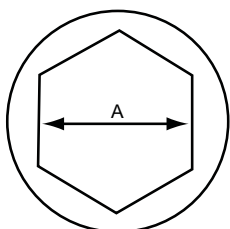
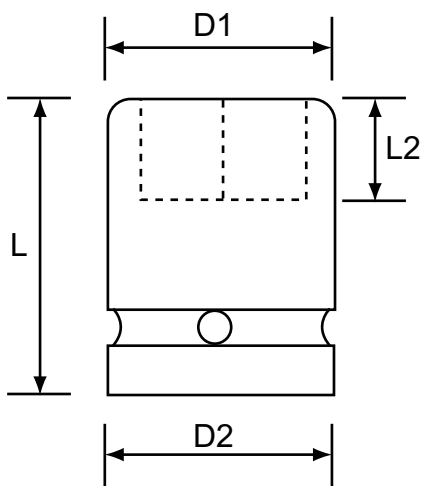
AF

Size (A) inch	D2 mm	D1 mm	L2 mm	L mm	Best. nr
2-7/8	62	102	80	128	1646L
2-15/16	86	104	85	135	1647L
3"	86	106	85	135	1648L
3-1/8	86	109	85	135	1650L
3-1/4	86	113	85	135	1652L
3-3/8	86	115	85	135	1654L
3-1/2	86	119	85	135	1656L
3-5/8	86	127	85	135	1658L
3-3/4	86	130	85	135	1660L
3-7/8	95	136	82	135	1662L
4"	95	140	82	135	1664L
4-1/8	95	143	82	135	1666L
4-1/4	95	146	82	135	1668L
4-1/2	95	152	82	135	1672L

seks-kant piper



1" standard lengde



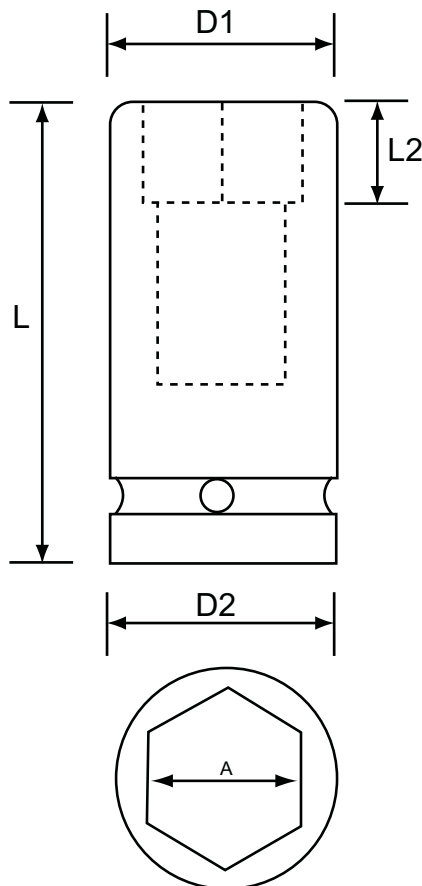
whitworth

Size (A) Whit	D2 mm	D1 mm	L2 mm	L mm	Best. nr
7/16	51	38	17	58	16W07
1/2	51	40	17	58	16W08
9/16	51	42	17	58	16W09
5/8	51	46	19	58	16W10
11/16	51	46	21	60	16W11
3/4	52	53	21	62	16W12
13/16	52	54	21	62	16W13
7/8	52	58	26	62	16W14
15/16	52	60	26	62	16W15
1"	52	65	27	64	16W16
1-1/16	58	68	27	64	16W17
1-1/8	58	70	28	66	16W18
1-1/4	58	75	31	70	16W19
1-3/8	62	84	34	75	16W22
1-1/2	62	87	35	78	16W24
1-5/8	62	93	36	80	16W26
1-3/4	62	98	40	85	16W28
1-7/8	86	106	52	98	16W30
2"	86	113	52	100	16W32
2-1/8	86	115	52	100	16W34
2-1/4	86	119	55	105	16W36
2-3/8	86	130	55	105	16W38
2-1/2	96	136	52	105	16W40
2-5/8	96	140	52	105	16W42
2-3/4	96	146	52	105	16W44
2-7/8	96	152	52	106	16W46
3"	96	155	52	106	16W48

seks-kant piper



1" lang type



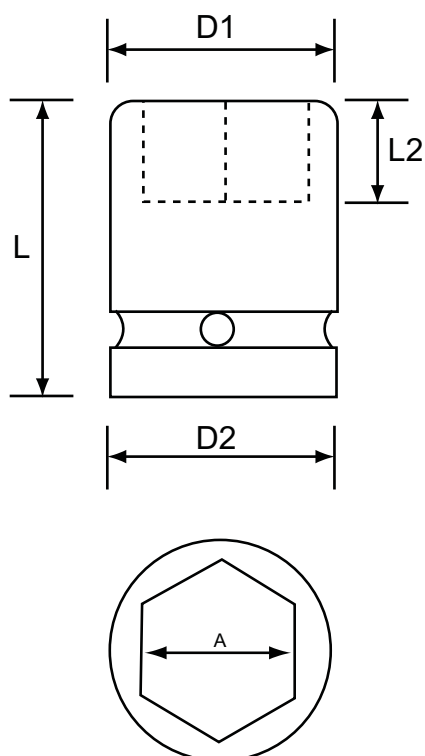
whitworth

Size (A) Whit	D2 mm	D1 mm	L2 mm	L mm	Best. nr
7/16	54	38	21	100	16W07L
1/2	54	41	21	100	16W08L
9/16	54	45	21	100	16W09L
5/8	54	47	23	100	16W10L
11/16	54	51	24	100	16W11L
3/4	54	53	24	100	16W12L
13/16	54	55	24	100	16W13L
7/8	54	59	24	100	16W14L
15/16	54	62	24	100	16W15L
1"	54	64	25	100	16W16L
1-1/16	54	68	25	100	16W17L
1-1/8	54	72	25	100	16W18L
1-1/4	54	77	25	100	16W19L
1-3/8	54	80	26	105	16W22L
1-1/2	54	86	26	105	16W24L
1-5/8	54	92	26	125	16W26L
1-3/4	86	104	27	135	16W28L
1-7/8	86	109	28	135	16W30L
2"	86	109	28	135	16W32L
2-1/8	86	115	28	135	16W34L
2-1/4	86	119	28	135	16W36L
2-3/8	86	130	29	135	16W38L
2-1/2	86	130	29	135	16W40L
2-5/8	86	135	30	135	16W42L
2-3/4	86	138	30	135	16W44L
2-7/8	86	140	30	135	16W46L
3"	90	142	30	135	16W48L

seks-kant piper



1 1/2 " standard lengde



mm

Size (A) mm	D2 mm	D1 mm	L2 mm	L mm	Best. nr
32	86	58	23	78	24M32
33	86	58	23	78	24M33
34	86	62	23	78	24M34
35	86	62	23	78	24M35
36	86	64	23	78	24M36
38	86	66	24	78	24M38
39	86	68	24	78	24M39
40	86	68	24	78	24M40
41	86	70	26	80	24M41
42	86	71	26	80	24M42
43	86	74	27	84	24M43
44	86	74	27	84	24M44
45	86	75	27	84	24M45
46	86	76	27	84	24M46
47	86	77	29	84	24M47
48	86	79	29	84	24M48
50	86	81	29	87	24M50
52	86	83	31	87	24M52
54	86	86	36	90	24M54
55	86	86	36	90	24M55
56	86	86	38	92	24M56
58	86	92	38	92	24M58
60	86	93	38	92	24M60
61	86	95	40	95	24M61
62	86	96	40	95	24M62
65	86	97	40	95	24M65
70	86	105	43	100	24M70
75	86	110	45	103	24M75
80	86	116	50	110	24M80
85	86	125	55	118	24M85
90	86	130	55	118	24M90
95	95	137	55	118	24M95
100	95	140	58	125	24M100
105	95	150	58	125	24M105
110	95	156	58	125	24M110
115	95	160	65	135	24M115
120	95	168	65	135	24M120
125	95	175	65	135	24M125

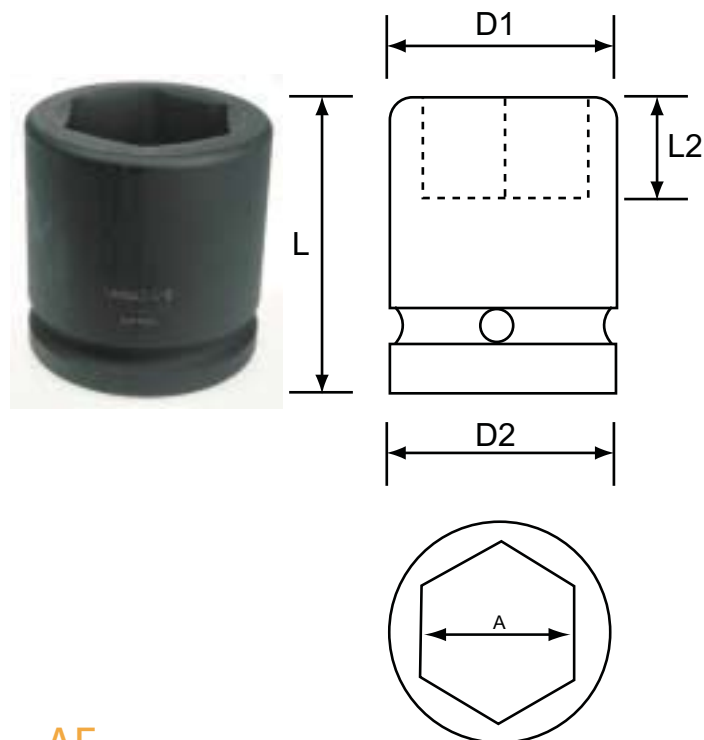
seks-kant piper



1 1/2 " standard lengde

AF

Size (A) inch	D2 mm	D1 mm	L2 mm	L mm	Best. nr
1-1/4	86	58	23	78	2420
1-5/16	86	60	23	78	2421
1-3/8	86	62	23	78	2422
1-7/16	86	64	23	78	2423
1-1/2	86	66	24	78	2424
1-9/16	86	68	24	78	2425
1-5/8	86	70	26	80	2426
1-11/16	86	71	26	80	2427
1-3/4	86	75	27	84	2428
1-13/16	86	76	27	84	2429
1-7/8	86	78	29	84	2430
1-15/16	86	80	29	87	2431
2"	86	82	29	87	2432
2-1/16	86	83	30	87	2433
2-1/8	86	86	36	90	2434
2-3/16	86	86	36	90	2435
2-1/4	86	86	38	92	2436
2-5/16	86	92	38	92	2437
2-3/8	86	93	38	92	2438
2-7/16	86	96	40	95	2439
2-1/2	86	97	40	95	2440
2-9/16	86	97	40	95	2441
2-5/8	86	103	43	100	2442
2-11/16	86	104	43	100	2443
2-3/4	86	105	43	100	2444
2-13/16	86	108	45	103	2445
2 7/8	86	108	45	103	2446
2-15/16	86	110	45	103	2447
3"	86	110	45	103	2448
3-1/16	86	115	50	110	2449
3-1/8	86	116	50	110	2450
3-3/16	86	125	50	110	2451
3-1/4	86	125	50	110	2452
3-5/16	86	125	55	118	2453



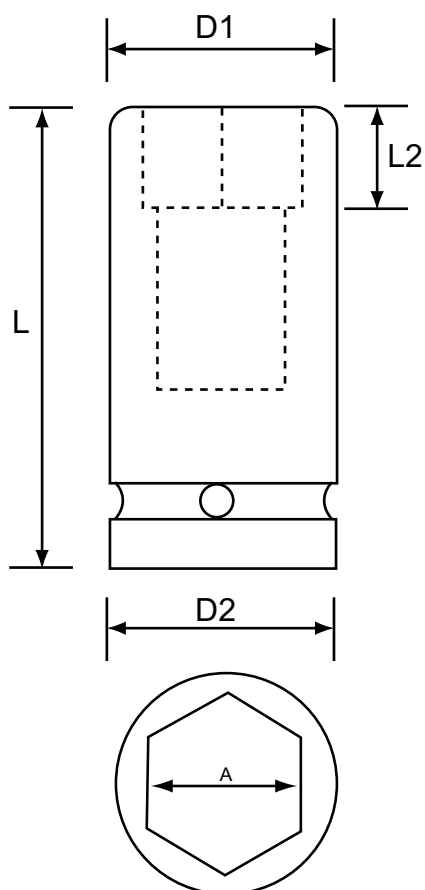
AF

Size (A) inch	D2 mm	D1 mm	L2 mm	L mm	Best. nr
3-3/8	86	125	55	118	2454
3-7/16	86	128	55	118	2455
3-1/2	86	130	55	118	2456
3-9/16	86	130	55	118	2457
3-5/8	86	130	55	118	2458
3-11/16	86	130	55	118	2459
3-3/4	95	137	55	118	2460
3-13/16	95	140	58	125	2461
3-7/8	95	140	58	125	2462
3-15/16	95	140	58	125	2463
4"	95	140	58	125	2464
4-1/16	95	140	58	125	2465
4-1/8	95	150	58	125	2466
4-3/16	95	150	58	125	2467
4-1/4	95	150	58	125	2468
4-5/16	95	156	58	125	2469
4-3/8	95	160	58	125	2470
4-7/16	95	160	58	125	2471
4-1/2	95	160	65	125	2472
4-5/8	95	168	65	135	2474
4-3/4	95	168	65	135	2476

seks-kant piper



1 1/2 " lang type



mm/AF

Size (A) mm	Size (A) inch	D2 mm	D1 mm	L2 mm	L mm	Best. nr
30	1-3/16	83	56.5	28	120	24M30L
32	1-1/4	83	59	28	120	24M32L
33		83	60	28	120	24M33L
35	1-3/8	83	63	30	120	24M35L
38	1-1/2	83	66.5	32	120	24M38L
41	1-5/8	83	70	32	150	24M41L
	1-3/4	83	75	34	150	2428L
46	1-13/16	83	76.5	34	150	24M46L
50		83	81.5	34	150	24M50L
51	2	83	82.5	38	150	24M51L
55		86	88	42	150	24M55L
60	2-3/8	86	94	42	150	24M60L
65	2-9/16	86	100	45	150	24M65L
70	2-3/4	102	106.5	45	170	24M70L
75	2-15/16	102	113	50	170	24M75L
	3	102	114	50	170	2448L
80	3-1/8	102	119	50	170	24M80L
85		102	125	50	180	24M85L
90		102	133	55	180	24M90L
95	3-3/4	102	140	55	190	24M95L
100		102	150	65	190	24M100L
	4	102	150	35	190	2464L
105	4-1/8	102	154	65	190	24M105L
110		102	160	65	200	24M110L
115		102	165	65	200	24M115L
120	4-3/4	102	172	65	200	24M120L

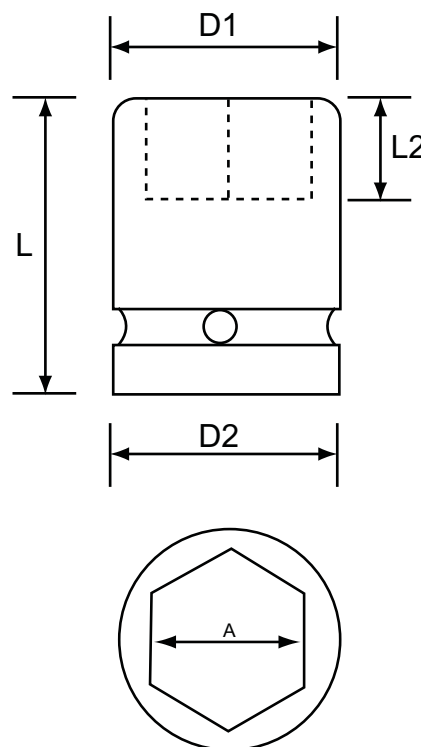
seks-kant piper



2 1/2 " standard lengde

mm/AF

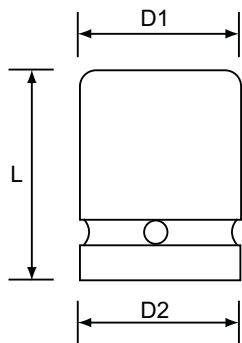
Size (A) mm	Size (A) inch	D2 mm	D1 mm	L2 mm	L mm	Best. nr
50		127	82	34	130	40M50
51	2	127	86	34	130	40M51
55		127	92	36	130	40M55
60	2-3/8	127	98	36	130	40M60
65	2-9/16	127	104	40	130	40M65
70	2-3/4	127	110	40	140	40M70
75	2-15/16	127	115	50	140	40M75
	3	127	120	50	140	4048
80	3-1/8	127	125	50	140	4050
85		127	131	50	140	40M85
	3-1/2	127	135	55	140	4056
90		127	137	55	150	40M90
95	3-3/4	127	143	55	150	40M95
	3-7/8	127	147	65	150	4062
100		127	150	65	150	40M100
	4	153	153	65	150	4064
105	4-1/8	153	156	65	150	40M105
	4-1/4	153	159	65	150	4068
110		153	163	65	150	40M110
	4-1/2	153	169	65	150	4072
115		153	169	65	150	40M115
120	4-3/4	153	180	65	150	40M120
	4-7/8	153	182	65	150	4078
125		153	186	65	150	40M125
	5	153	190	65	150	4080



torx piper - innvendig type



1/4" standard lengde



Drive	Size	D2 mm	D1 mm	L mm	Best. nr
1/4	E4	13	7.2	25	FT04E04
1/4	E5	13	8	25	FT04E05
1/4	E6	13	9	25	FT04E06
1/4	E7	13	9.5	25	FT04E07
1/4	E8	13	10	25	FT04E08
1/4	E10	13	12.5	25	FT04E10
1/4	E11	13	13	25	FT04E11
1/4	E12	14.5	14.5	25	FT04E12



3/8" standard lengde



Drive	Size	D2 mm	D1 mm	L mm	Best. nr
3/8	E5	19	9	32	FT06E05
3/8	E6	19	10	32	FT06E06
3/8	E7	19	10	32	FT06E07
3/8	E8	19	10.5	32	FT06E08
3/8	E10	19	12.5	32	FT06E10
3/8	E11	19	14.5	32	FT06E11
3/8	E12	19	15	32	FT06E12
3/8	E14	19	17.5	32	FT06E14
3/8	E16	19	19	32	FT06E16

28



1/2" standard lengde



Drive	Size	D2 mm	D1 mm	L mm	Best. nr
1/2	E10	25	15	38	FT08E10
1/2	E11	25	15.5	38	FT08E11
1/2	E12	25	16	38	FT08E12
1/2	E14	25	18.5	38	FT08E14
1/2	E16	25	20	38	FT08E16
1/2	E18	25	22	38	FT08E18
1/2	E20	30	25	38	FT08E20
1/2	E22	30	26.5	45	FT08E22
1/2	E24	30	28.5	45	FT08E24



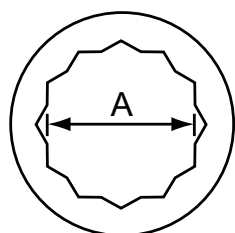
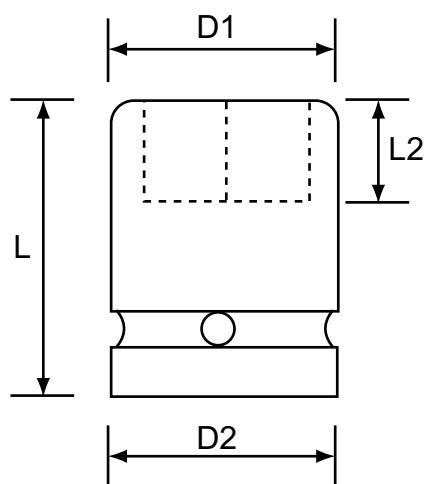
3/4" standard lengde

Drive	Size	D2 mm	D1 mm	L mm	Best. nr
3/4	E24	44	33	55	FT12E24

tolv-kant piper



1/2 " standard lengde



bi-hexagon mm

Size (A) mm	D2 mm	D1 mm	L2 mm	L mm	Best. nr
8	24	15	9	38	BH08M08
9	24	15	12	38	BH08M09
10	24	17	12	38	BH08M10
11	24	18	12	38	BH08M11
12	24	19	12	38	BH08M12
13	24	20	12	38	BH08M13
14	24	20	12	38	BH08M14
15	24	24	12	38	BH08M15
16	24	24	12	38	BH08M16
17	26	26	13	38	BH08M17
18	26	26	13	38	BH08M18
19	28	28	13	38	BH08M19
20	30	30	13	38	BH08M20
21	30	30	13	38	BH08M21
22	32	32	13	38	BH08M22
23	32	32	13	38	BH08M23
24	34	34	19	45	BH08M24
25	36	36	19	45	BH08M25
26	36	36	20	50	BH08M26
27	38	38	20	50	BH08M27
28	38	40	20	50	BH08M28
29	38	40	20	50	BH08M29
30	38	42	20	50	BH08M30
32	38	42	20	50	BH08M32
33	38	44	20	50	BH08M33
36	38	48	25	50	BH08M36

tolv-kant piper

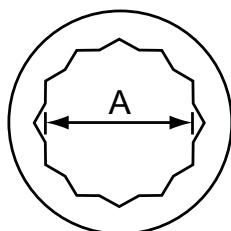
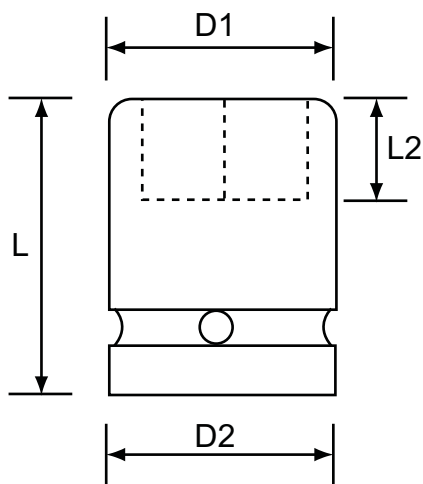


1/2 " standard lengde



bi-hexagon AF

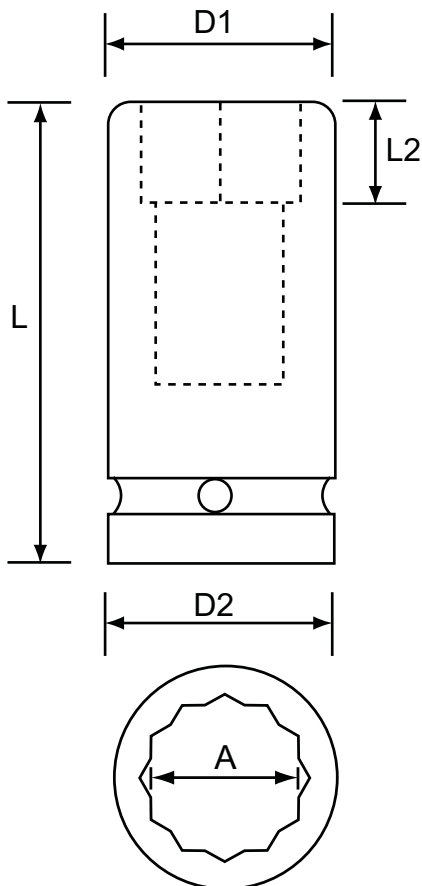
Size (A) AF	D2 mm	D1 mm	L2 mm	L mm	Best. nr
5/16	24	15	9	38	BH0805
3/8	24	16	12	38	BH0806
7/16	24	18	12	38	BH0807
1/2	24	20	12	38	BH0808
9/16	24	22	12	38	BH0809
5/8	24	24	12	38	BH0810
11/16	26	26	13	38	BH0811
3/4	28	28	13	38	BH0812
13/16	30	30	13	38	BH0813
7/8	32	32	13	38	BH0814
15/16	34	34	19	45	BH0815
1"	36	36	19	45	BH0816
1-1/16	38	38	20	50	BH0817
1-1/8	38	40	20	50	BH0818
1-3/16	38	42	20	50	BH0819
1-1/4	38	44	20	50	BH0820
1-5/16	38	45	25	50	BH0821
1-3/8	38	47	25	50	BH0822
1-7/16	38	48.5	25	50	BH0823
1-1/2	38	50.5	25	50	BH0824



tolv-kant piper



1/2 " lang type



bi-hexagon mm

Size (A) mm	D2 mm	D1 mm	L2 mm	L mm	Best. nr
10	25	17.5	14	83	BH08M10L
11	25	18.5	14	83	BH08M11L
12	25	20	14	83	BH08M12L
13	25	21	14	83	BH08M13L
14	25	22.5	24	83	BH08M14L
15	30	23.5	24	83	BH08M15L
16	30	25	24	83	BH08M16L
17	30	26	24	83	BH08M17L
18	30	27.5	24	83	BH08M18L
19	30	28.5	24	83	BH08M19L
20	30	30	24	83	BH08M20L
21	30	31	24	83	BH08M21L
22	30	32	24	90	BH08M22L
23	30	34	24	90	BH08M23L
24	30	35	24	90	BH08M24L
26	30	38	24	90	BH08M25L
27	30	38.5	24	90	BH08M26L
28	30	40	24	90	BH08M27L
29	30	41	24	90	BH08M28L
30	30	42	24	90	BH08M29L
32	30	44	24	90	BH08M30L
33	30	46	35	90	BH08M32L
34	30	48	36	90	BH08M33L
35	30	50	37	90	BH08M35L
36	30	52	38	90	BH08M36L

tolv-kant piper

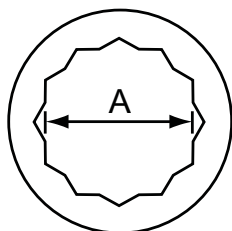
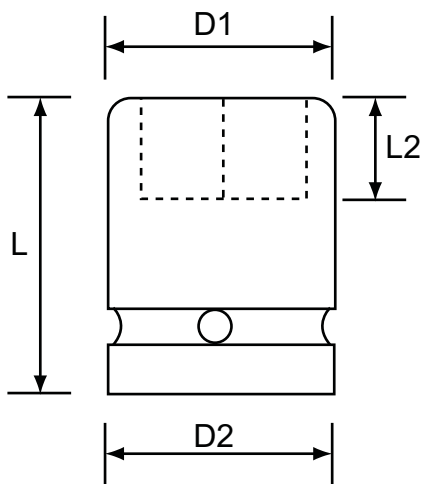


3/4" standard lengde



bi-hexagon mm

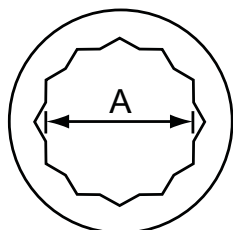
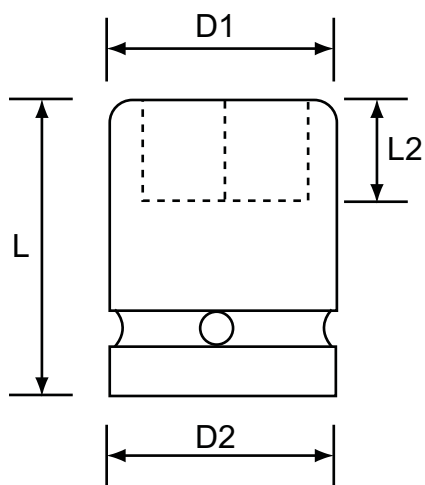
Size (A) mm	D2 mm	D1 mm	L2 mm	L mm	Best. nr
17	38	28	12	50	BH12M17
18	38	29	12	50	BH12M18
19	38	30	14	50	BH12M19
20	38	31	16	52	BH12M20
21	38	32	16	52	BH12M21
22	38	34	16	52	BH12M22
23	38	35	16	52	BH12M23
24	38	36	18	52	BH12M24
25	38	38	18	52	BH12M25
26	38	40	23	52	BH12M26
27	38	40	23	52	BH12M27
28	38	42	23	52	BH12M28
29	38	43	23	52	BH12M29
30	38	43	23	52	BH12M30
31	38	44	24	56	BH12M31
32	38	45	24	56	BH12M32
33	38	46	24	56	BH12M33
34	38	48	25	56	BH12M34
35	38	50	26	56	BH12M35
36	38	51	24	56	BH12M36
37	38	52	24	56	BH12M37
38	38	53	24	56	BH12M38
39	38	55	28	62	BH12M39
41	38	58	28	62	BH12M41
43	38	63	28	62	BH12M43
46	38	67	33	68	BH12M46
50	38	71	34	70	BH12M50
55	54	77	36	74	BH12M55
56	54	77	36	74	BH12M56
60	54	80	50	90	BH12M60



tolv-kant piper



3/4" standard lengde

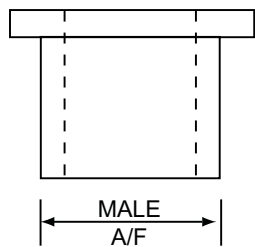
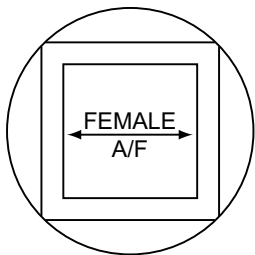


bi-hexagon AF

Size (A) inch	D2 mm	D1 mm	L2 mm	L mm	Best. nr
5/8	38	27	12	50	BH1210
13/16	38	31	16	52	BH1213
7/8	38	34	16	52	BH1214
1	38	38	18	52	BH1216
1-1/8	38	43	23	52	BH1218
1-5/16	38	46	24	56	BH1221
1-7/16	38	52	24	56	BH1223
1-9/16	38	55	28	62	BH1225
1-11/16	38	67	33	68	BH1227
1-3/4	38	67	33	68	BH1228
1-7/8	38	71	34	70	BH1230
1-15/16	38	71	34	70	BH1231
2	38	71	34	70	BH1232
2-1/16	38	71	34	70	BH1233
2-1/8	54	77	36	74	BH1234
2-3/16	54	77	36	74	BH1235
2-1/4	54	77	36	74	BH1236
2-5/16	54	77	36	74	BH1237
2-7/16	54	77	36	74	BH1239
2-1/2	54	86	37	78	BH1240



reduserende innsatser (firkant)



F female	M male	L mm	O.D. mm	Best. nr
1/4	1/2	20	17	RS0408
3/8	1/2	19	17	RS0608
1/2	5/8	22	21	RS0810
1/2	3/4	29	26	RS0812
3/4	1	33	34	RS1216
1	1-1/2	46	50	RS1624
1-1/2	2-1/2	50	69	RS2440
2-1/2	3-1/2	96	121	RS4056

34



mellomstykker hun/hun (firkant)



female	female	D2 mm	D1 mm	L mm	Best. nr
1/2	1/2	25	25	33	FF0808
1/2	5/8	35	30	41	FF0810
5/8	5/8	35	35	35	FF1010
3/4	1/2	44	30	49	FF1208
3/4	5/8	44	35	50	FF1210
3/4	3/4	44	44	49	FF1212
1"	3/4	54	44	63	FF1612
1"	1	54	54	59	FF1616
1-1/2	1-1/2	86	86	85	FF2424



mellomstykker han/han (firkant)



male	male	L mm	Best. nr
1/2	1/2	37	MM0808
5/8	5/8	40	MM1010
3/4	3/4	50	MM1212
1"	3/4	55	MM1612
1"	1"	90	MM1616
1-1/2	1-1/2	90	MM2424
2-1/2	2-1/2	100	MM4040

pipesett - krom

3/4 " firkant pipesett - krom

23 delers sett



SET1223PC	
Innhold:	
6pt metrisk standard lengde - 19, 20, 21, 22, 23, 24, 26, 27, 29, 30, 32, 33, 35, 36, 38, 41, 46, 50mm	
Skralle	500mm L
T- håndtak	450mm L
Forlengere	100, 150, 200mm

1 " firkant pipesett - krom

AF 23 deler

SET-H16AF	
Innhold:	Piper:
Heavy Duty Skralle	1-7/16", 1-1/2", 1-5/8", 1-11/16"
Heavy Duty T - håndtak	1-13/16", 1-7/8", 2", 2-1/16"
Forlenger 8" (200mm)	2-1/8", 2-3/16", 2-1/4", 2-3/8"
Forlenger 16" (400mm)	2-1/2", 2-9/16", 2-5/8", 2-3/4"
Universal Ledd	2-15/16", 3-1/8"
Stålkasse - sort	

mm 17 deler

SET-H16MM	
Innhold:	Piper
Heavy Duty Skralle	35, 36, 38, 41, 46, 50, 55,
Heavy Duty T - håndtak	60, 65, 70, 75, 80
Forlenger 8" (200mm)	
Forlenger 16" (400mm)	
Universal Ledd	
Stålkasse - sort	



holdere/bit/adapter sett

holder/bit



36

SETHOLDBIT

15 deler 3/4" & 1" dr, impact sekskant

Holder & Bit Pipe sett

Innhold:

1st 3/4" dr, 22mm sekskant holder

1st 1" dr, 22mm sekskant holder

4st 22mm sekskant impact driver bits:
17mm, 19mm, 22mm, 24mm

4stk 22mm sekskant impact utvendig torx bits:
E18, E20, E22, E24

5stk 22mm sekskant impact innvendig torx bits:
T60, T70, T80, T90, T100

inkludert 2.5mm Umbrako - nøkkel

Overgangs sett



SETADAPT/1

1/2" hun x 3/8" han 1/2" hun x 3/4" han

3/8" hun x 1/2" han 3/4" hun x 1" han

3/4" hun x 1/2" han 1" hun x 3/4" han

magnetisk pipesett



SET04MAGMM 1/4 metrisk 12 delers magnetisk sett
Innhold: 6mm, 7mm, 8mm, 9mm, 10mm, 11mm, 12mm, 13mm, 14mm Forlengere 50mm, 100mm Adapter 3/8f x 1/4m

SET04MAGAF 1/4 AF 12 delers magnetisk sett
Innhold: 3/16, 7/32, 1/4, 9/32, 5/16, 11/32, 3/8, 7/16, 1/2 Forlengere 50mm, 100mm Adapter 3/8f x 1/4m

SET06MAGMM 3/8 metrisk 9 delers magnetisk sett
Innhold: 9mm, 10mm, 11mm, 12mm, 13mm, 14mm, 15mm, 17mm, 19mm

SET06MAGAF 3/8 AF 9 delers magnetisk sett
Innhold: 1/4, 5/16, 3/8, 7/16, 1/2, 9/16, 5/8, 11/16, 3/4

SET08MAGMM 1/2 metrisk 14 delers magnetisk sett
Innhold: 10mm, 11mm, 12mm, 13mm, 14mm, 15mm, 16mm, 17mm, 18mm, 19mm, 20mm, 21mm, 22mm, 24mm

SET08MAGAF 1/2 AF 10 delers magnetisk sett
Innhold: 3/8, 7/16, 1/2, 9/16, 5/8, 11/16, 3/4, 7/8, 15/16, 1"

kraftpipe sett

1/4" metrisk
8 delers pipe sett



STANDARD LENGDE SET04MMS
Innhold: 4, 4.5, 5, 5.5, 6, 7, 8, 9mm

1/4" metrisk
12 delers pipe sett



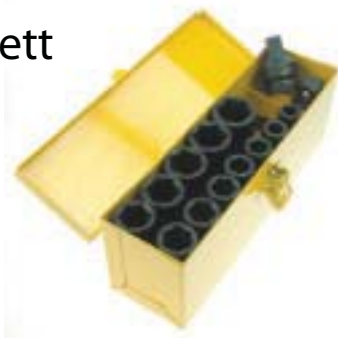
STANDARD LENGDE SET0412PC
Innhold: 6, 7, 8, 9, 10, 11, 12, 13, 14mm Forlengere 50mm, 100mm 3/8 Hun x 1/4 Han Adapter

3/8" AF 12 delers
- pipe sett



STANDARD LENGDE SET06AFS
LANG TYPE SET06AFL
Innhold: 5/16, 3/8, 7/16, 1/2, 9/16, 5/8, 11/16, 3/4, 13/16, 7/8 1/2 Hun x 3/8 Han adapter 3/8 Hun x 1/2 Han adapter

3/8" metrisk 14 delers
- pipe sett



STANDARD LENGDE SET06MMS
LANG TYPE SET06MML
Innhold: 8, 9, 10, 11, 12, 13, 14, 15, 16, 17, 18, 19mm 1/2 Female x 3/8 Male adaptor 3/8 Female x 1/2 Male adaptor

kraftpipe sett

1/2" AF 14 deler

- pipesett



STANDARD LENGDE SET08AFS	
LANG TYPE	SET08AFL
Innhold:	
7/16, 1/2, 9/16, 5/8, 11/16, 3/4, 13/16, 7/8, 15/16, 1", 1-1/16, 1-1/8	
1/2 Hun x 3/8 Han adapter	
3/8 Hun x 1/2 Han adapter	

1/2" metrisk 15 deler

- pipesett



STANDARD LENGDE SET08MMS	
LANG TYPE	SET08MML
Innhold:	
10mm, 11mm, 12mm, 13mm, 14mm, 15mm, 16mm, 17mm, 18mm, 19mm, 22mm, 24mm, 27mm	
1/2 Hun x 3/8 Han adapter	
3/8 Hun x 1/2 Han adapter	

1/2" AF bi-hexagon

12 kant 14 deler

- pipesett

STANDARD LENGDE SET08BHAF	
Innhold:	
7/16, 1/2, 9/16, 5/8, 11/16, 3/4, 13/16, 7/8, 15/16, 1", 1-1/16, 1-1/8	
1/2 Hun x 3/8 Han adapter	
3/8 Hun x 1/2 Han adapter	

1/2" metrisk bi-hexagon

12 kant 15 deler

- pipesett

STANDARD LENGDE SET08HMM	
Innhold:	
10mm, 11mm, 12mm, 13mm, 14mm, 15mm, 16mm, 17mm, 18mm, 19mm, 22mm, 24mm, 27mm	
1/2 Hun x 3/8 Han adapter	
3/8 Hun x 1/2 Han adapter	

kraftpipe sett

3/4" metrisk 25 deler pipesett

SET12MMS
Innhold: 17, 19, 22, 24, 27, 28, 30, 32, 33, 35, 36, 38, 41, 43, 46, 50, 55, 60mm Heavy duty T - håndtak Universal ledd Forlenger 3" (75mm) Forlenger 6" (150mm) Forlenger 10" (250mm) 1" Hun x 3/4" Han adapter 3/4" Hun x 1" Han adapter

1" metrisk 25 deler pipesett

SET16MMS
Innhold: 19, 22, 24, 27, 28, 30, 32, 33, 36, 38, 41, 46, 50, 55, 60, 65, 70, 75mm Heavy duty T - håndtak Universal ledd Forlenger 4" (100mm) Forlenger 8" (200mm) Forlenger 12" (300mm) 1" Hun x 3/4" Han adapter 3/4" Hun x 1" Han adapter

3/4" AF 27 deler pipesett

SET12AFS
Innhold: 5/8, 11/16, 3/4, 7/8, 15/16, 1", 1-1/16, 1-1/8, 1-3/16, 1-1/4, 1-3/8, 1-1/2, 1-5/8, 1-13/16, 1-15/16, 2", 2-1/8, 2-1/4, 2-3/8, 2-9/16 Heavy duty T - håndtak Universal ledd Forlenger 3" (75mm) Forlenger 6" (150mm) Forlenger 10" (250mm) 1" Hun x 3/4" Han adapter 3/4" Hun x 1" Han adapter

1" AF 28 deler pipesett

SET16AFS
Innhold: 3/4, 15/16, 1", 1-1/16, 1-3/16, 1-1/4, 1-3/8, 1-1/2, 1-5/8, 1-3/4, 1-13/16, 1-15/16, 2", 2-1/8, 2-1/4, 2-3/8, 2-1/2, 2-5/8, 2-3/4, 2-15/16, 3" Heavy duty T - håndtak Universal ledd Forlenger 4" (100mm) Forlenger 8" (200mm) Forlenger 12" (300mm) 1" Hun x 3/4" Han adapter 3/4" Hun x 1" Han adapter

kraftpipe sett



41

1" pipesett i 5 deler for hjul lang type

SET16VWN

Innhold:

24, 27, 30, 32, 33

1" pipesett i 5 deler for hjul tynnvegget - lang type

SETTWVWN

Innhold:

24, 27, 30, 32, 33



slag nøkler

størrelser

BSW	AF	mm	Best. nr
	9/16		SS09RING
	5/8	16	SS10RING
	11/16		SS11RING
	3/4	19	SS12RING
	13/16		SS13RING
		22	SSM22RNG
	7/8		SS14RING
	15/16	24	SS15RING
9/16	1		SS16RING
	1-1/16	27	SS17RING
5/8		28	SSW10RNG
	1-1/8		SS18RING
11/16	1-3/16	30	SS19RING
	1-1/4	32	SS20RING
3/4	1-5/16	33	SS21RING
13/16	1-3/8	35	SS22RING
		36	SSM36RNG
	1-7/16		SS23RING
7/8	1-1/2	38	SS24RING
	1-9/16		SS25RING
15/16		40	SSW15RNG
	1-5/8	41	SS26RING
1	1-11/16		SS27RING
	1-3/4		SS28RING
	1-13/16	46	SS29RING
1-1/8	1-7/8		SS30RING
	1-15/16	49	SS31RING
		50	SSM50RING
	2	51	SS32RING
1-1/4		52	SSW20RING
	2-1/16		SS33RING
	2-1/8	54	SS34RING
	2-3/16	55	SS35RING
1-3/8			SSW22RING
	2-1/4	57	SS36RING
	2-5/16		SS37RING
	2-3/8	60	SS38RING
1-1/2		61	SSW24RING
	2-7/16	62	SS39RING
	2-1/2		SS40RING
	2-9/16	65	SS41RING

størrelser

BSW	AF	mm	Best. nr
1-5/8			SSW26RING
	2-5/8	67	SS42RING
1-3/4	2-3/4	70	SS44RING
	2-13/16		SS45RING
	2-7/8	73	SS46RING
	2-15/16	75	SS47RING
1-7/8	3	77	SS48RING
	3-1/16	78	SS49RING
	3-1/8	79	SS50RING
2		80	SSM80RING
	3-1/4	83	SS52RING
		85	SSM85RING
	3-3/8	86	SS54RING
	3-1/2	89	SS56RING
		90	SSM90RING
	3-5/8	92	SS58RING
	3-3/4	95	SS60RING
	3-7/8	99	SS62RING
		100	SS100MRING

størrelser

BSW	AF	mm	Best. nr
	4	102	SS64RING
	4-1/8	105	SS66RING
	4-1/4	108	SS68RING
		110	SSM110RNG
	4-1/2	115	SS72RING
	4-5/8	118	SS74RING
	4-3/4	120	SS76RING
		125	SSM125RNG
	5	127	SS80RING
	5-1/8	130	SS82RING
		135	SSM135RNG
	5-3/8	137	SS86RING
		140	SSM140RNG
		145	SSM145RNG
	5-3/4	146	SS92RING
		150	SSM150RNG
	6	153	SS96RING



slag nøkler

flat - åpen i en ende

størrelser

BSW	AF	mm	Best. nr
	7/8		FS14OE
1/2			FSW08OE
	15/16	24	FSM24OE
9/16	1		FSW09OE
	1-1/16	27	FSM27OE
	1-1/8		FS18OE
	1-3/16	30	FSM30OE
11/16			FSW11OE
	1-1/4	32	FSM32OE
3/4		33	FSW12OE
	1-5/16		FS21OE
		36	FSM36OE
7/8			FSW14OE
	1-1/2	38	FS24OE
	1-5/8	41	FSM41OE
1			FSW16OE
	1-11/16	43	FS27OE

størrelser

BSW	AF	mm	Best. nr
	1-13/16	46	FSM46OE
1-1/8			FSW18OE
	1-7/8		FS30OE
		50	FSM50OE
	2	51	FS32OE
1-1/4			FSW20OE
	2-1/16		FS33OE
		55	FSM55OE
1-3/8			FSW22OE
	2-1/4	57	FS36OE
	2-3/8	60	FSM60OE
1-1/2			FSW24OE
	2-9/16	65	FSM65OE
1-5/8			FSW26OE
	2-5/8	67	FS42OE
	2-3/4	70	FSM70OE
1-3/4			FSW28OE



slag nøkler - åpen - flat

størrelser

Size mm	Best. nr
27	SSM27OE
30	SSM30OE
32	SSM32OE
36	SSM36OE
41	SSM41OE
46	SSM46OE
50	SSM50OE
55	SSM55OE
60	SSM60OE

størrelser

Size mm	best. nr
65	SSM65OE
70	SSM70OE
75	SSM75OE
80	SSM80OE
85	SSM85OE
90	SSM90OE
95	SSM95OE
100	SSM100OE
105	SSM105OE



seks-kant utvendig

3/8" firkant drev

Size A	L mm	L1 mm	D2 mm	Best. nr
3	50	16	19	MHD06M03
4	50	16	19	MHD06M04
5	50	16	19	MHD06M05
6	50	16	19	MHD06M06
7	50	16	19	MHD06M07
8	50	16	19	MHD06M08
9	50	16	19	MHD06M09
10	50	16	19	MHD06M10
11	50	16	19	MHD06M11
12	50	16	19	MHD06M12
13	50	16	19	MHD06M13
14	50	16	19	MHD06M14
15	50	16	19	MHD06M15
16	50	16	19	MHD06M16

1" firkant drev

Size A	L mm	L1 mm	D2 mm	Best. nr
10	100	20	54	MHD16M10
12	100	20	54	MHD16M12
14	100	20	54	MHD16M14
17	100	20	54	MHD16M17
19	100	20	54	MHD16M19
20	100	20	54	MHD16M20
22	100	20	54	MHD16M22
24	100	20	54	MHD16M24
27	100	20	54	MHD16M27
30	100	20	54	MHD16M30
32	100	20	54	MHD16M32

44

1/2" firkant drev

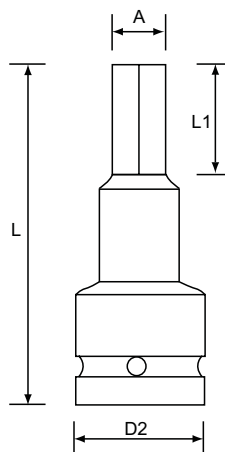
Size A	L mm	L1 mm	D2 mm	Best. nr
4	75	20	25	MHD08M04
5	75	20	25	MHD08M05
6	75	20	25	MHD08M06
8	75	25	25	MHD08M08
10	75	25	25	MHD08M10
12	75	25	25	MHD08M12
14	75	25	25	MHD08M14
17	75	25	25	MHD08M17
19	75	25	25	MHD08M19

1 1/2" firkant drev

Size A	L mm	L1 mm	D2 mm	Best. nr
19	120	20	86	MHD24M19
22	120	20	86	MHD24M22
24	120	20	86	MHD24M24
27	120	20	86	MHD24M27
30	120	20	86	MHD24M30
32	120	20	86	MHD24M32
36	120	20	86	MHD24M36
38	120	20	86	MHD24M38
41	120	20	86	MHD24M41
46	120	20	86	MHD24M46
50	120	20	86	MHD24M50
55	120	20	86	MHD24M55

3/4" firkant drev

Size A	L mm	L1 mm	D2 mm	Best. nr
10	100	20	44	MHD12M10
12	100	20	44	MHD12M12
14	100	20	44	MHD12M14
17	100	20	44	MHD12M17
19	100	20	44	MHD12M19
22	100	20	44	MHD12M22
24	100	20	44	MHD12M24



seks-kant utvendig

3/8" firkant drev

Size A	L mm	L1 mm	D2 mm	Best. nr
3/16	50	16	19	MHD0603
7/32	50	16	19	MHD063.5
1/4	50	16	19	MHD0604
9/32	50	16	19	MHD064.5
5/16	50	16	19	MHD0605
3/8	50	16	19	MHD0606
7/16	50	16	19	MHD0607
1/2	50	16	19	MHD0608
9/16	50	16	19	MHD0609
5/8	50	16	19	MHD0610

1/2" firkant drev

Size A	L mm	L1 mm	D2 mm	Best. nr
3/16	75	20	25	MHD0803
7/32	75	20	25	MHD0803.5
1/4	75	20	25	MHD0804
5/16	75	25	25	MHD0805
3/8	75	25	25	MHD0806
7/16	75	25	25	MHD0807
1/2	75	25	25	MHD0808
9/16	75	25	25	MHD0809
5/8	75	25	25	MHD0810
3/4	75	25	25	MHD0812

3/4" firkant drev

Size A	L mm	L1 mm	D2 mm	Best. nr
3/8	100	20	44	MHD1206
7/16	100	20	44	MHD1207
1/2	100	20	44	MHD1208
9/16	100	20	44	MHD1209
5/8	100	20	44	MHD1210
3/4	100	20	44	MHD1212
7/8	100	20	44	MHD1214
1"	100	20	44	MHD1216

1" firkant drev

Size A	L mm	L1 mm	D2 mm	Best. nr
3/8	70	10	54	MHD1606
7/16	100	20	54	MHD1607
1/2	100	20	54	MHD1608
9/16	100	20	54	MHD1609
5/8	100	20	54	MHD1610
3/4	100	20	54	MHD1612
7/8	100	20	54	MHD1614
1"	100	20	54	MHD1616

1 1/2" firkant drev

Size A	L mm	L1 mm	D2 mm	Best. nr
3/4	120	20	86	MHD2412
13/16	120	20	86	MHD2413
7/8	120	20	86	MHD2414
15/16	120	20	86	MHD2415
1"	120	20	86	MHD2416
1-1/16	120	20	86	MHD2417
1-3/16	120	20	86	MHD2419
1-1/4	120	20	86	MHD2420



spesial verktøy



46

Hytorc Norge AS kan levere alle typer spesial piper etter mål.

Sekskant, firkant, umbrako innvendig og utvendig, åttekant, ekstra lange piper, tynnveggede piper m.m.

Ta kontakt med vårt salgsteam med dine spesifikasjoner, og vi gir dere ett uforpliktende tilbud.

ring og pinne



låsepinne





VÅRE PIPER



DIN KRAFT

...may the force be with you...

www.HYTORC.no

tlf: 51 71 54 00

kundeservice@hytorc.no