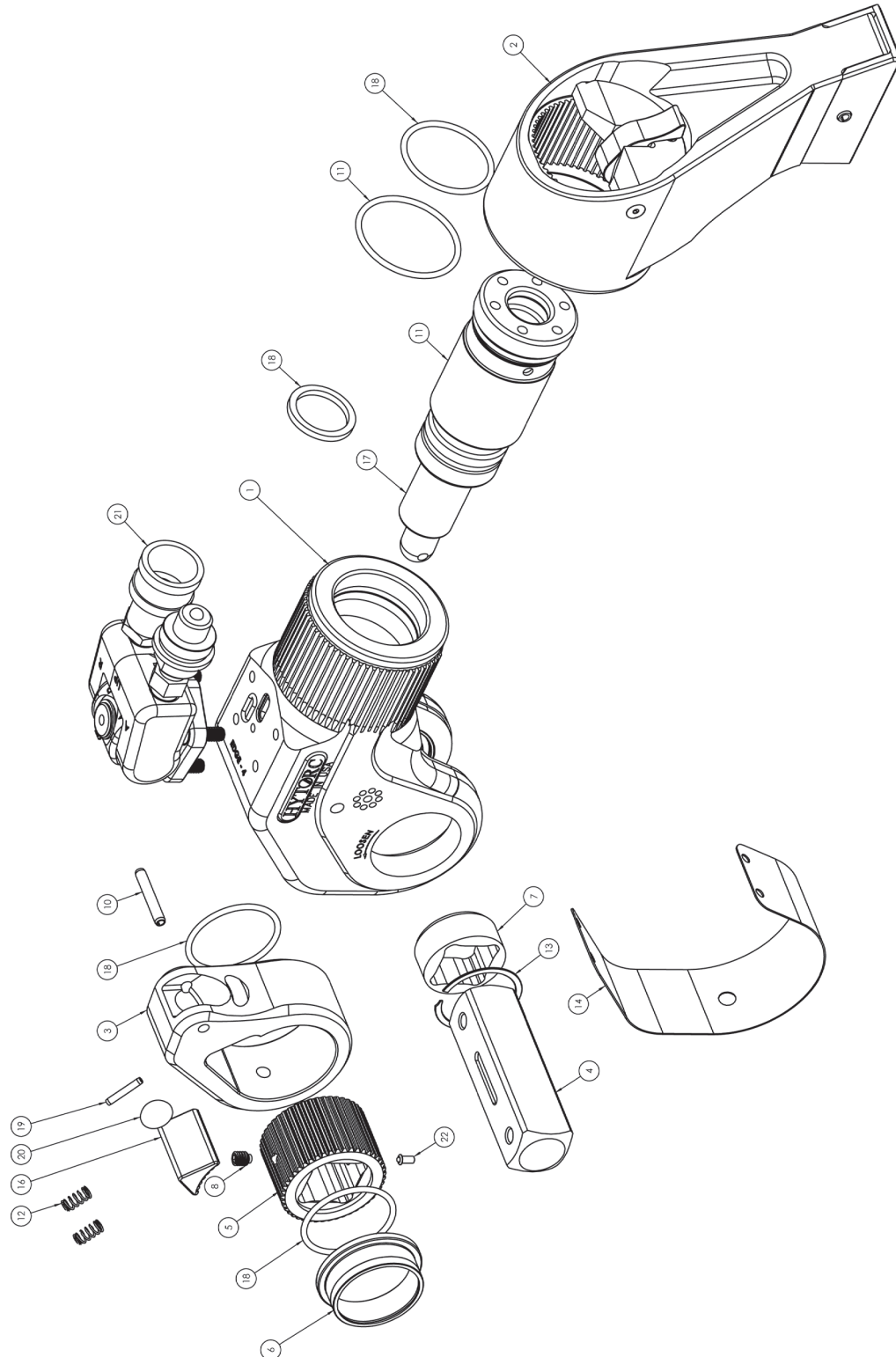


# EDGE



# EDGE



ITEM	DESCRIPTION	EDGE-.5	EDGE-2	EDGE-4	EDGE-6	EDGE-8	EDGE-12	EDGE-30
1	HOUSING COMPLETE	EDGE-.5-01	EDGE-02-01	EDGE-04-01	EDGE-06-01	EDGE-08-01	EDGE-12-01	EDGE-30-01
2	REACTION ARM ASSEMBLY	EDGE-.5-03	EDGE-02-03	EDGE-04-03	EDGE-06-03	EDGE-08-03	EDGE-12-03	EDGE-30-03
3	DRIVE PLATE	EDGE-.5-04	EDGE-02-04	EDGE-04-04	EDGE-06-04	EDGE-08-04	EDGE-12-04	EDGE-30-04
4	SQUARE DRIVE	EDGE-.5-05	EDGE-02-05	EDGE-04-05	EDGE-06-05	EDGE-08-05	EDGE-12-05	EDGE-30-05
5	RATCHET	EDGE-.5-06	EDGE-02-06	EDGE-04-06	EDGE-06-06	EDGE-08-06	EDGE-12-06	EDGE-30-06
6	DRIVE BUSHING (x2)	EDGE-.5-07	EDGE-02-07	EDGE-04-07	EDGE-06-07	EDGE-08-07	EDGE-12-07	EDGE-30-07
7	DRIVE SLEEVE (x2)	EDGE-.5-08	EDGE-02-08	EDGE-04-08	EDGE-06-08	EDGE-08-08	EDGE-12-08	EDGE-30-08
8	SET SCREW FOR RATCHET	N/A	EDGE-02-09	EDGE-04-09	N/A	EDGE-08-09	EDGE-12-09	N/A
9	DRIVE RETAINER	EDGE-.5-11	N/A	N/A	EDGE-06-11	N/A	N/A	EDGE-30-11
10	DRIVE PLATE ROLL PIN	EDGE-.5-17	EDGE-02-17	EDGE-04-17	EDGE-06-17	EDGE-08-17	EDGE-12-17	EDGE-30-17
11	END CAP SLEEVE W/SEAL	EDGE-.5-26	EDGE-02-26	EDGE-04-26	EDGE-06-26	EDGE-08-26	EDGE-12-26	EDGE-30-26
12	DRIVE SEGMENT SPRING (x2)	EDGE-.5-27	EDGE-02-27	EDGE-04-27	EDGE-06-27	EDGE-08-27	EDGE-12-27	EDGE-30-27
13	DRIVE SLEEVE RETAINING RING (x2)	EDGE-.5-30	EDGE-02-30	EDGE-04-30	EDGE-06-30	EDGE-08-30	EDGE-12-30	EDGE-30-30
14	SAFETY SHROUD	EDGE-.5-31	EDGE-02-31	EDGE-04-31	EDGE-06-31	EDGE-08-31	EDGE-12-31	EDGE-30-31
15	SHROUD SCREW (X4)	EDGE-.5-32	EDGE-02-32	EDGE-04-32	EDGE-06-32	EDGE-08-32	EDGE-12-32	EDGE-30-32
16	DRIVE SEGMENT	EDGE-.5-60	EDGE-02-60	EDGE-04-60	EDGE-06-60	EDGE-08-60	EDGE-12-60	EDGE-30-60
17	PISTON ROD ASSEMBLY	EDGE-.5-61	EDGE-02-61	EDGE-04-61	EDGE-06-61	EDGE-08-61	EDGE-12-61	EDGE-30-61
18	SEAL KIT	EDGE-.5-62	EDGE-02-62	EDGE-04-62	EDGE-06-62	EDGE-08-62	EDGE-12-62	EDGE-30-62
19	SEGMENT GUIDE-ROLL PIN	EDGE-.5-65	EDGE-02-65	EDGE-04-65	EDGE-06-65	EDGE-08-65	EDGE-12-65	N/A
20	SEGMENT SLIDER	EDGE-.5-66	EDGE-02-66	EDGE-04-66	EDGE-06-66	EDGE-08-66	EDGE-12-66	EDGE-30-66
21	UNISWIVEL ASSEMBLY	EDGE-002	EDGE-002	EDGE-004	EDGE-004	EDGE-012	EDGE-012	EDGE-012
22	PLUNGER FOR RATCHET	N/A	EDGE-02-10	EDGE-04-10	N/A	EDGE-08-10	EDGE-12-10	N/A